

ADIB

Selected Works 2017-2023



ADIB ARCHITECTS

ADIB

Selected Works 2017-2023



ADIB HAYDAR

Founder of Adib Architects
Chief Architect and Creative Director
adib@adibhaydar.com
Beirut, Lebanon

Adib Haydar is an Architect, Artist, and Urbanist based in Beirut. After gaining valuable experience in various roles at several firms in Beirut, he embarked on a journey to realize his architectural vision in 2017. Born and raised in Lebanon, Adib pursued his architectural education at the Lebanese University, specifically at the Institute of Fine Arts and Architecture. His passion for innovation and urban development propelled him to further his academic pursuits, culminating in the completion of his doctoral degree, a Ph.D. in Smart Cities development, from the Doctoral School of Literature, Humanities & Social Sciences in June 2021.

Adib is a modernist and minimalist architect profoundly influenced by the works of architectural masters like Tadao Ando and Louis Kahn. His architectural style is characterized by pure geometric shapes and fundamental forms, with a strong emphasis on harnessing natural lighting within his interior spaces. The simplicity of his designs is intended to evoke sensation and engage with physical experiences. Adib Haydar adeptly employs the language of modernism to create fresh and enduring effects, reaffirming the enduring power of geometry in contemporary architecture. His preference for concrete as the primary material, combined with his use of abstract forms, is driven by concrete's remarkable qualities as a modern urban material. Concrete allows architecture to embody honesty, sculpture, authenticity, and uniqueness. It lends a sense of permanence, avoiding the artificial, and stands the test of time, persisting for generations to come. It's a perfect material to use with light and shadows and forms, it's magical.

As a Design Architect, Adib's strength lies in his talent and vision for crafting compelling concepts through hand sketching and storytelling, instilling deep meaning into his designs. This artistic approach is further complemented by his exceptional proficiency in design software, which breathes life into his projects. Adib seizes every opportunity to apply his creativity and design capabilities, creating architecture that resonates deeply with society and adds meaningful value.

Furthermore, as an urban planner, Adib has been working in developing a Lebanese National Strategy for Digital Transformation, showcasing the potential of "Social Smartness" in enhancing the resilience and livability of our cities amidst future digital transformations. His endeavors revolve around leveraging his capabilities, knowledge, extensive experience, and research insights to drive transformative change in the Arab World and contribute to the advancement of Smart Cities in the Middle East.



NOUR HAYDAR

Designer of Adib Architects
Interior Architect & Office Director
nour@adibhaydar.com

Nour Haydar is a minimalist interior architect at Adib Architect & Associates, born and raised in Lebanon. She earned her Master's degree in Interior Architecture from Lebanese University, Faculty of Fine Arts and Architecture in 2019.

As a pivotal team member, she focuses on translating the architect's artistic vision into reality. Her interior designs, deeply influenced by Lebanese culture, emphasize sensory experiences and physical sensations. Nour's approach centers on simplicity, delving into inner feelings rather than superficial appearances. This focus allows people to immerse themselves in the spatial richness defined by geometry.

Nour specializes in designing spaces and unique furniture pieces, aiming to achieve a cohesive and distinctive experience characterized by modern cleanliness. Working with emptiness poses a unique challenge, as every piece of furniture becomes a significant element. It requires an artistic sensibility to select the right pieces that seamlessly match our simple style.

ABOUT

Adib Architects is a distinguished Lebanese architecture firm that aims to revive Arabic Mediterranean Architecture and showcase the elegance of contemporary design principles through minimalism. Founded by Architect Dr. Adib Haydar, this design-focused concrete architecture firm specializes in crafting simple, clean, pure, and authentic concrete structures, all while embracing a modernist aesthetic. Driven by a commitment to create genuinely unique architecture, Adib Architects places a strong emphasis on enriching the human experience and making a lasting impact on both the physical and moral aspects of society. The firm's endeavors are rooted in the pursuit of architectural excellence that brings profound meaning to the lives of individuals and the broader community. They achieve this by harnessing the interplay of natural elements such as light, shadows, trees, and water to breathe life into their concrete forms. This minimalist approach delves deeply into the essence of architectural forms and geometrics. Adib Architects meticulously curates the spaces we inhabit to elevate the soul's experience within them.

At Adib Architects, we believe in creating unique architecture by only using architecture fundamentals and principles, including harmony, rhythm, proportion, and consistency. However, we go beyond mere aesthetics by infusing our designs with a sense of spirituality, calmness, and meditation. We seek to create valuable architecture not just a buildings.

In the view of Adib Architects, architecture should be valuable, devoid of decoration and ornaments unless they bring meaning. Architecture is a powerful storyteller, and it's essential to use it correctly to tell our stories as individuals and societies. That's why ancient architecture endures in our memories. True architectural greatness transcends time and remains relevant, driven by the strength of its design and the impact it has on people's lives.

“

Architecture should have a deep meaning in its presence, forms, and details, meaning makes it alive forever.”



Architecture without Meaning is just Engineering; its Value comes from its Philosophical Depth.

Adib Haydar

ADIB ENDEAVORS

These are architectural endeavors where architect Adib Haydar delves deeply into the true essence of architecture. He explores various design methods and the meanings they produce. These attempts aim to distinguish between the enchantment of ancient architecture and the superficiality of most modern architecture. This differentiation stems from understanding the profound depth and hidden secrets that ancient architecture still holds. What makes architecture “valuable” and meaningful, and who determines this? There is a consensus on the creativity of ancient architecture, from its grandeur to its simplicity. In contrast, there is a struggle surrounding contemporary architecture, often costly and less socially, culturally, and spiritually valuable.

Architecture used to embody the ideas, beliefs, and faiths of people, reflecting the values, principles, and sciences of vibrant societies. It carried the spiritual and moral essence of these societies and exhibited it perpetually to visitors. Thus, architecture was a material and spiritual creation, constituting both the body and soul, substance, and meaning of existence. Sadly, modern architecture lacks this essence and meaning. Meaning is what sustains architecture, allowing it to transcend the challenges of time. Architecture that can be easily replaced, altered, or modified is temporary and not enduring or eternal; it serves a material and functional purpose. Architecture is a mirror of society, not a commercial product dictated by the market. Therefore, we must differentiate between religious buildings, palaces, governance structures, and the architecture of ordinary people. Islamic architecture was distinctive for introducing spiritual and moral elements into dwellings, extending beyond mosques.

These questions have occupied my thoughts, especially after practicing the profession for years. I attempted to apply the academic knowledge and creative abilities I possess to create real works that Arab architects could be proud of. However, the job market or the client lacks awareness of the significance of such work. Hence, I sought a method to challenge this perception, aiming for architecture that carries meaning in every line and shape, exerting both material and spiritual influence on people, whether visitors or inhabitants. It should possess clear identity and authenticity, not just another replica of what proliferates daily. Architecture should stand out with uniqueness, making each structure a unique entity with authentic body and soul. In the digital age, architecture loses its authenticity and value as a creative, artistic, and cultural intellectual achievement. Thus, architectural authenticity becomes a challenge of this era.

Anyone seeking to construct a building is attempting to create a body and soul that will endure for years. It is not merely a structure or shape; it is an entity with meaning that never dies. Modern architecture often falls short, concentrating on material and aesthetic challenges rather than deeper meanings. There is an exaggeration in everything, excessive ornamentation without origin or meaning, as if it were poorly designed décor. Ancient Islamic decorations, for instance, carried profound spiritual meanings and illuminating beliefs. The choice of shapes, proportions, and colors had significance and symbolism.

The ancient architectural experience is distinct, fascinating, and magical. It is a genuine, honest narrative that conveys history and culture, serving as a true mirror of their thoughts, beliefs, and knowledge. In contrast, today's architecture is a wandering, transient, hybrid structure lacking originality. Architecture is both a science and an art, with aesthetic foundations, proportions, and harmony. Humans cannot invent entirely new standards; history's experience has shown this. The square shape remains the ideal geometric form for living, providing humans with a sense of direction in all four directions on the Earth. Our Arabic and Islamic architecture lost most of its fundamentals. It was a robust architecture that utilized courtyards, lighting, water, and nature—everything living to breathe life into this architectural body, creating spiritual atmospheres in mosques and homes. All of this represented the life of a Muslim, rooted in the internal and spiritual worlds; thus, the interior was fundamental. We abandoned all of this and replaced it with modern methods unrelated to reality. Hence, we aim to reclaim what we have lost and present it in a modern, unique style, simple and pure. We want to produce architecture with value by returning to roots and origins but with a contemporary spirit.

“Architecture is a complete human experience for the senses (the body) and the soul, and this is the criterion for its success.” It is architecture that resonates with you, where every angle carries a message and a feeling, altering your sensations, stimulating you, provoking deep thoughts about its meaning and message. We want architecture to hold cultural value and heritage, to become a message the human conveys on Earth, his valuable civilization, his ideas, meanings, his present, and his past, his identity and his enduring legacy even after departure.

Our approach is the irresistible simplicity; ideas, in their simplicity, are more expressive and impactful on both humans and society. Simplicity has become a necessity in a society rife with complexities. In a life filled with anxiety and tension, we need spaces that make us feel spiritual and contemplative everywhere, especially in our homes, which lack any space for the soul and the body.

Concrete is poetic, real, simple, plastic, sculptural, timeless, sensitive to light and shadow.

The choice to use concrete stems from the enchantment of this material that has revolutionized architecture throughout history. It is an ancient substance that enables humans to construct their ideas, owing to its remarkable ability:

Aesthetically:

Concrete possesses distinctive aesthetic qualities. From the sensation of firmness, strength, and the enduring presence it bestows upon the beholder, its unique texture interacts enchantingly with natural light and shadow on one side, and colors on the other. It's a universal urban material, associated with modernity and contemporaneity due to its purity in ideal executions. Buildings serve as secure havens to which humans resort, seeking refuge from nature and danger, providing them with a sense of safety and protection.

Concrete has the remarkable ability to overcome the challenges of time both the physical challenges posed by natural elements such as sun, water, and air, and the design challenge of retaining its beauty despite the passage of time. It must remain timeless, resisting the effects of aging and retaining its aesthetic appeal regardless of evolving perceptions brought about by changing times. This challenge encapsulates the essence of architecture and design. Beautiful design withstands the test of time; it remains captivating even as cultures and ideas shift. This enduring quality is what we witness today in ancient architecture. It possesses an everlasting charm and beauty that transcends generations.



Sensibility:

Similar to how stone buildings have had a significant impact on those who lived and experienced these homes, modern concrete houses have the same effect on people due to shared physical properties: solidity, heaviness, and presence. Concrete is authentic, pure, and sincere; it's not just a superficial covering but the genuine foundation of construction. This material renders architecture poetic, simple, influential - the architect's clay, sculpting contemporary masterpieces infused with profound messages, social relevance, and urban significance.

What emotionally ties people to old homes is their robustness and design, intertwined with the Arab way of living across diverse climates and environments. This essence can be brought into contemporary concrete architecture today. Building with a single material necessitates a design capability that exposes every flaw, unlike today's concealed constructions. The ancients built with one material - clay and stone - creating timeless architecture imbued with deep meanings. The naturally graded gray color of concrete, resembling rock and clay, makes it an endlessly diverse and unique material visually. However, it always requires skilled hands to utilize it and showcase its value.

Concrete imparts value and presence to any geometric shape, no matter how simple. An ideal concrete wall is incomparable to ordinary walls. The strength, weight, and beauty of concrete make it aesthetically and intellectually superior. The mind discerns the difference well. Concrete appreciates things and spaces more because it establishes value in itself, whereas decorations and ornaments cover spaces, erasing their features.

Economically:

Concrete is readily available, inexpensive, and cost-effective. It forms the basis of all construction; why not make it beautiful? This is sufficient.

Structurally:

It's a structural material possessing qualities of strength, flexibility, offering immense possibilities for designers.

Sustainable Simplicity:

Embracing concrete aligns with the sustainable ethos of minimalism. Its durability ensures longevity, reducing the need for frequent renovations and minimizing environmental impact. Additionally, concrete's adaptability to innovative construction techniques enables the realization of eco-friendly, minimalist structures that stand the test of time.

In essence, the choice of concrete as a minimalist architect in the Arab world is a holistic decision-marrying aesthetics, functionality, cultural sensitivity, climate responsiveness, and sustainability. It embodies the essence of minimalism, creating spaces that are not just visually pleasing but also spiritually enriching, reflecting the harmony between human habitation and nature.



Concrete Polish Finish, Bource de Commerce

**Valuable Architecture
created by deep Philosophy
and Poetry.**

CONTENT

01. ECLIPSE - TUNNEL OF HOPE	09
02. NAQOURA CHALET	17
03. MOSQUE OF SUSPENDED DOME	26
04. 4 CUBES HOUSE	43
05. DHAYNEH CENTER	50
06. ONE CUBE HOUSE	61
07. CIRCLE SHADE	67
08. GEOMETRIC LIGHT	71
09. FLAT HOUSE	73
10. STAIR OF ART	77
11. HOUSE A3	79

Space can grant you freedom, confine you, and limit your thoughts. It can give you tranquility, stir your emotions, and lead you to contemplation. Conversely, it can be silent, devoid of meaning and value. Transforming architecture into a human experience requires a genius mind and sensory capabilities to grasp the meaning and impact before construction. What distinguishes a true architect is their ability to perceive the psychological and spiritual impact of space and design before building it. They address spaces as if they feel them before constructing them—not merely as areas but as observers and explorers seeking impact. They constantly search for design solutions that integrate the perpetual, sustainable, and variable impact of natural light, a different concept of sustainability. There is a physical and material need for light, but there is also a psychological and spiritual need for it.

Architecture holds no value if it's just an architectural copy of another work. That's not enough; it's a degradation of architecture. It's a new artistic and intellectual product every time an architect faces a new project, akin to a poet who possesses words yet each poem has its own magic.



ADIS

ECLIPSE - TUNNEL OF HOPE

Project

01

TYRE - SOUTH LEBANON

Location

108m²

Floor Area

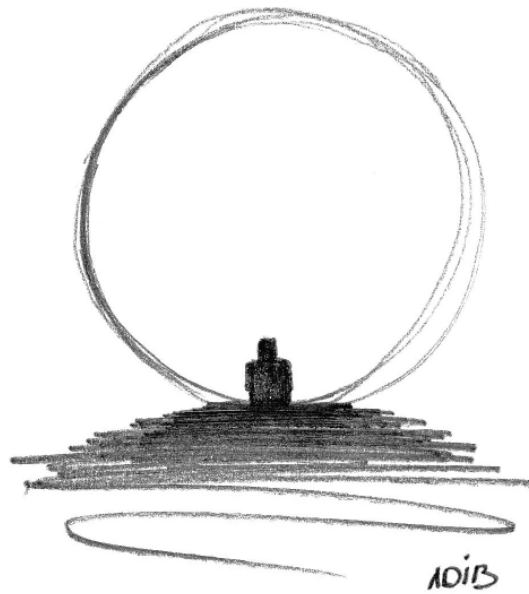
MEDITATION SPACE - PUBLIC

Building

Above: This sketch by Adib shows the main structure and schematically indicates light effect.

This sample structure, with a floor area 108m², is located in Tyre - South Lebanon. Inside the 6-meter-high concrete tube, which has one opening with door, light enters through a narrow strip running around the tube. The waxing crescent moon phase is all about the period in which the moon begins to get illuminated by the light of the sun once again after the darkness created by the new moon phase. That first light brings optimism and a chance at a new start.





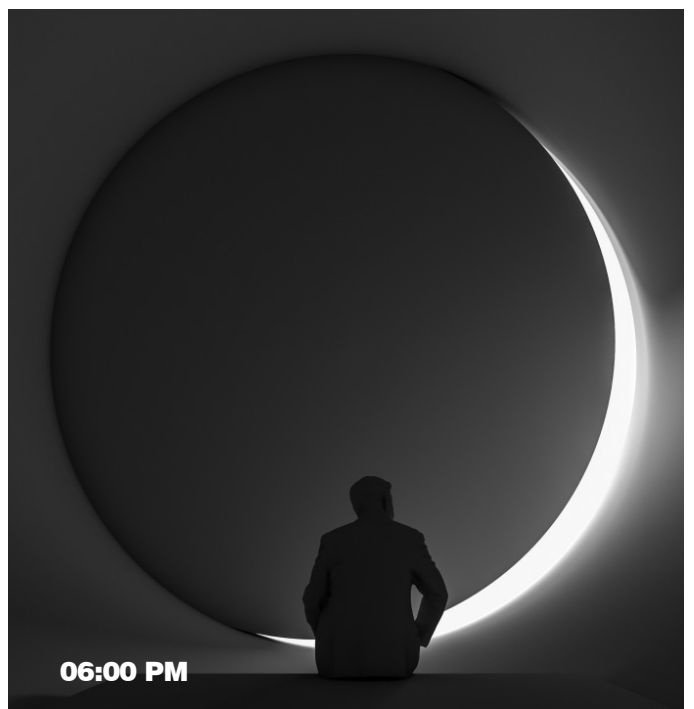
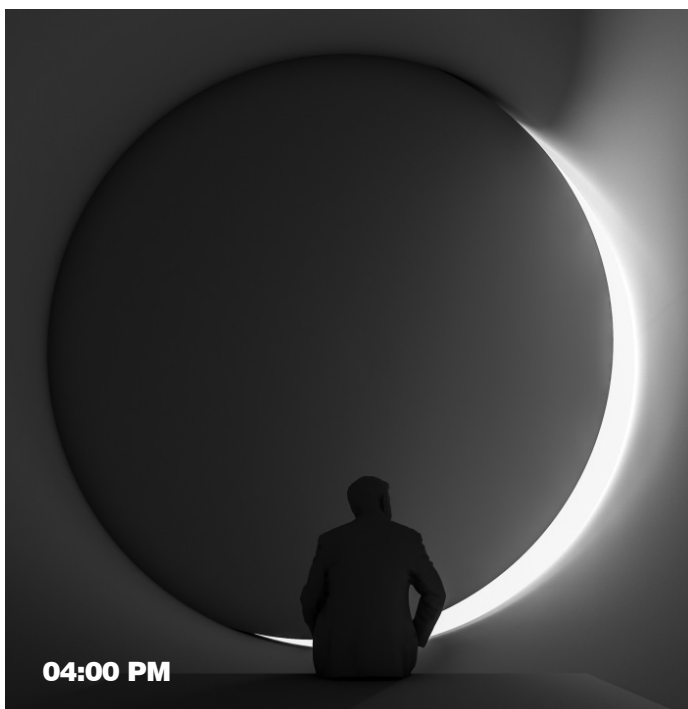
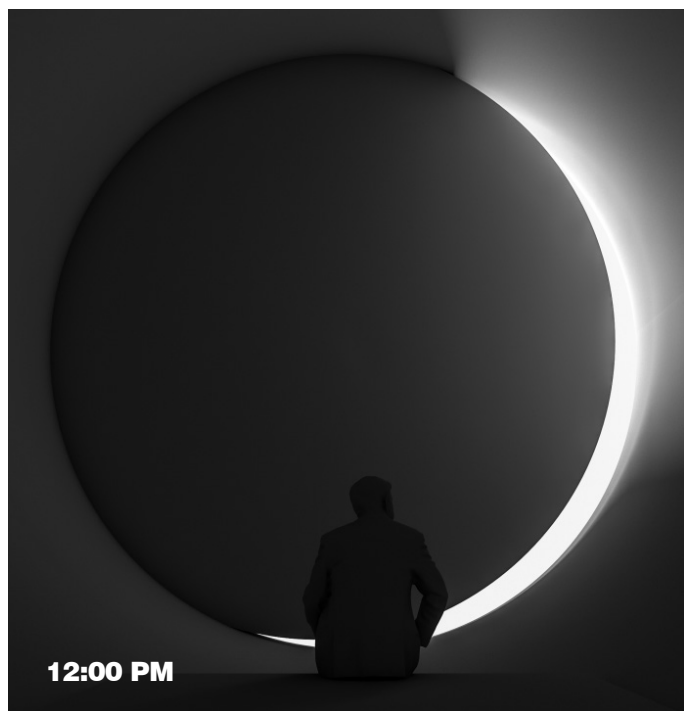
The purity of the space invites contemplation, and the architecture is the device that permits such thoughtful observance. The design intention is to originate the vivid spatial sequence from the long approach through the tunnel raising the expectation to the eclipse that is invisible from the outside, to finally reach the interior space where visitors look up at the eclipse at the end of the tunnel.

The interior space of Tunnel of Hope imparts a feeling of calm which is confirmed by the powerful simplicity of the structure itself. There is a strong contrast between the dark interior and the bright light coming through the crescent opening. Adib create a new place in a broad sense-exploring new points of view and ways of thinking, expressing surprise and emotion, and communicating these feelings to the society.

Eclipse - Tunnel of Hope is a dark concrete building whose interior is in total darkness in order to permit visitors to view the very subtle light effects conceived by Adib Haydar. A space which creates a strong sense of spirituality.



Below: The light penetrates even more from crescent moon, highlighting the large concrete walls during the day.



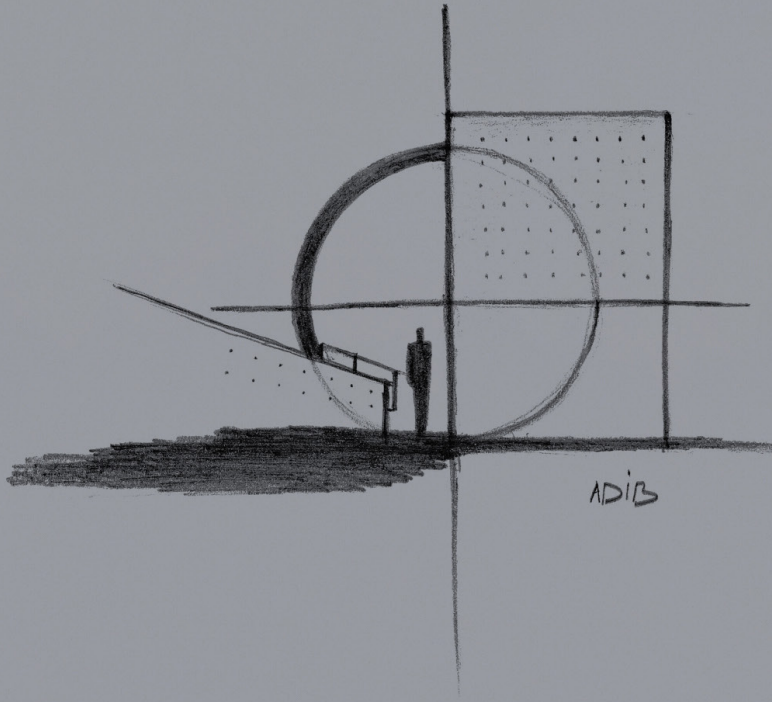
The frontal view of the structure shows the route by which the visitor enters and leaves. Adib does not fail to surprise visitors with the variety of architectural inventions present in this relatively constrained space. There is very definitely a processional sense in the approach to the eclipse. Whose the entrance is only visible until visitors reach the interior space of the building.

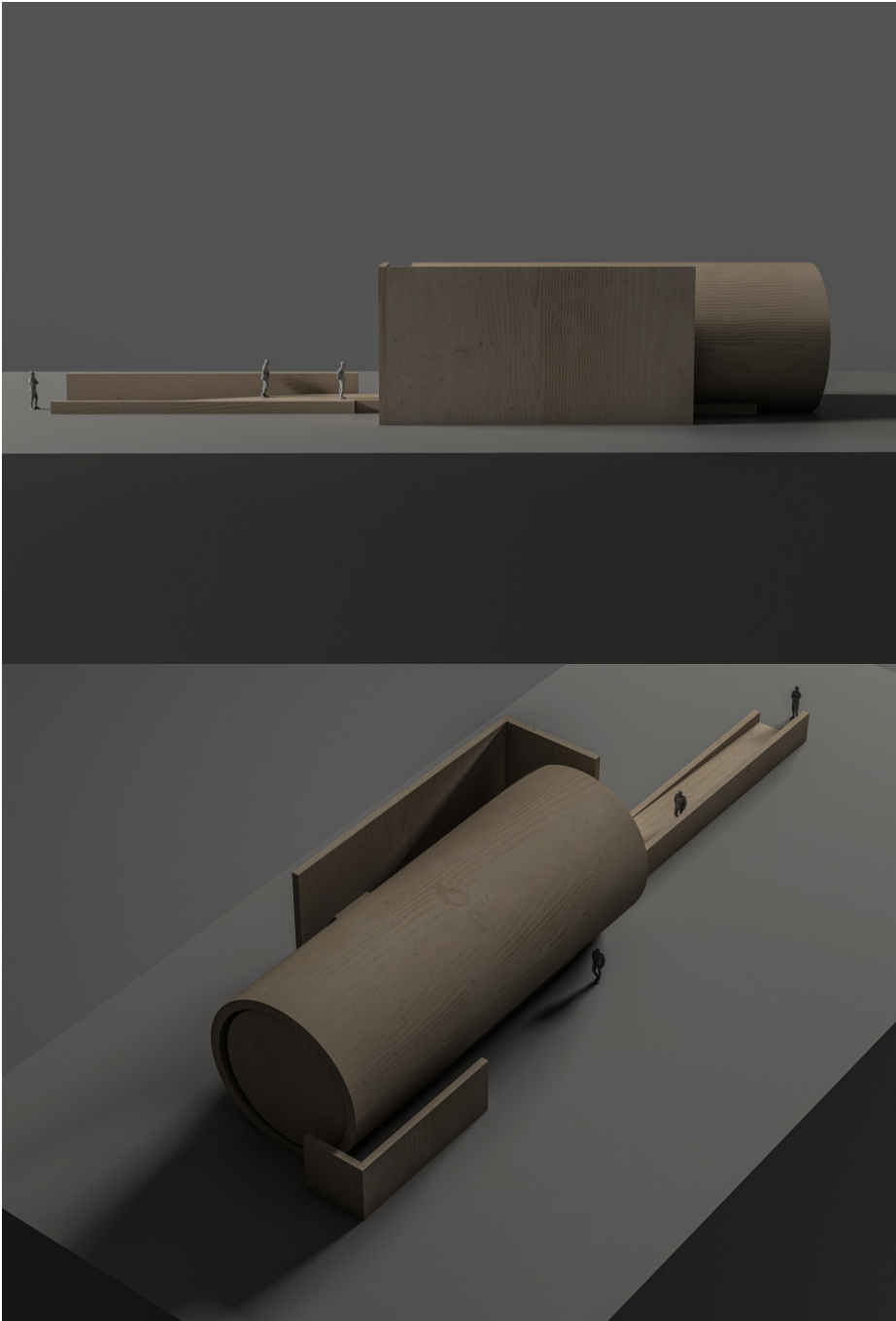


ECLIPSE - TUNNEL OF HOPE

Project

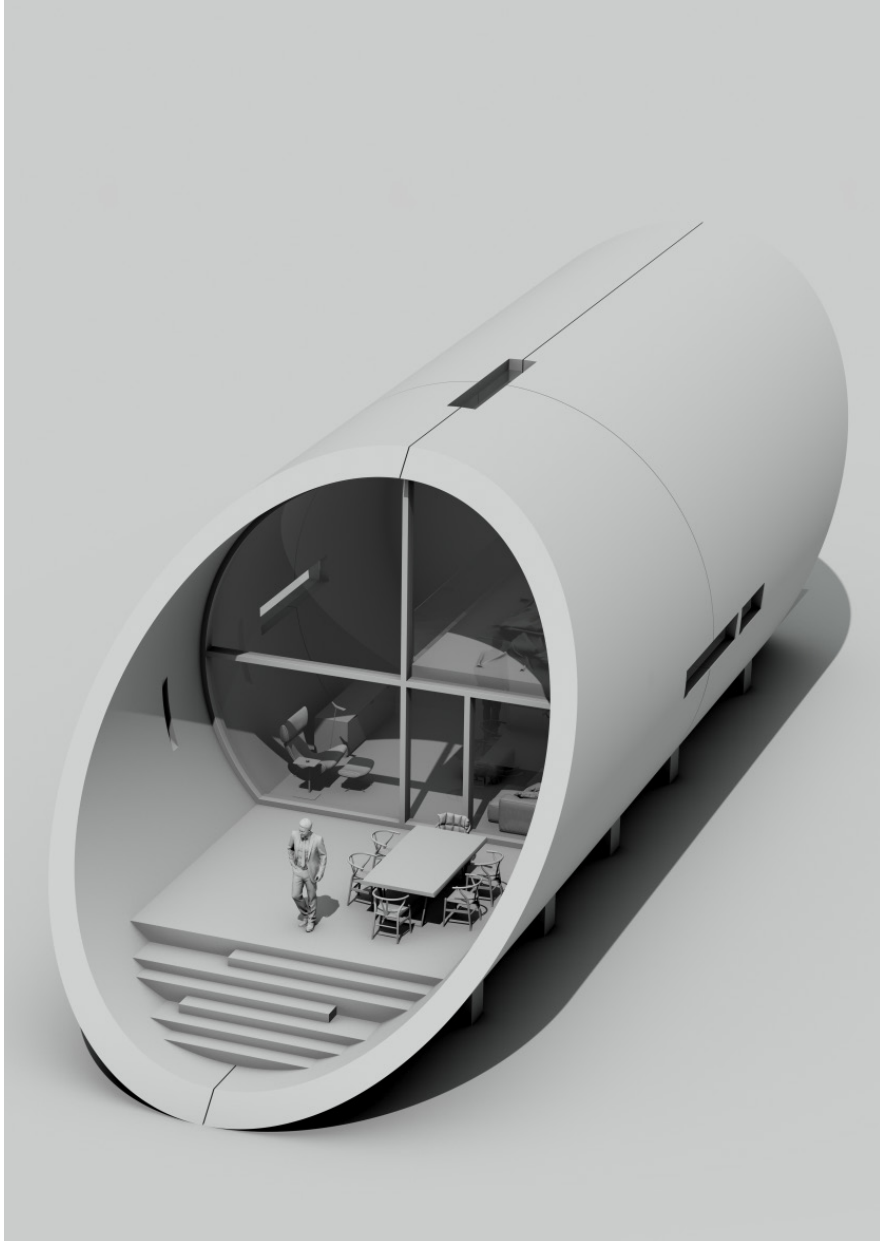
01





Simple, strong geometry can be understood and appreciated anywhere in the world. Adib designed religious or spiritual buildings “Tunnel of Hope” and “Mosque of Suspended Dome” that demonstrate Adib Haydar’s capacity to reach the essence of spiritual beliefs, no matter what the religion concerned.

Adib’s installation, using extremely low light levels, invites the visitor to discover a world where the usual perception of space and time seems suspended. He is trying to make light a physical experience, so when you see light it is no longer illuminating other things, it is the thing. He likes the thing-ness of light, its presence when it seems more powerful a thing than any object.



NAQOURA CHALET
Naqoura - South Lebanon

NAQOURA CHALET

Project

NAQOURA - SOUTH LEBANON

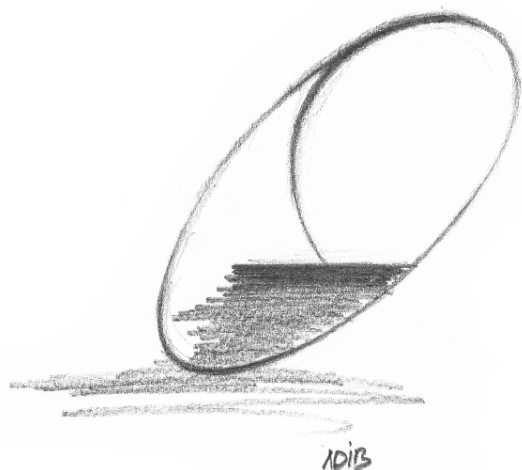
Location

150m²

Floor Area

PRIVATE RESIDENCE

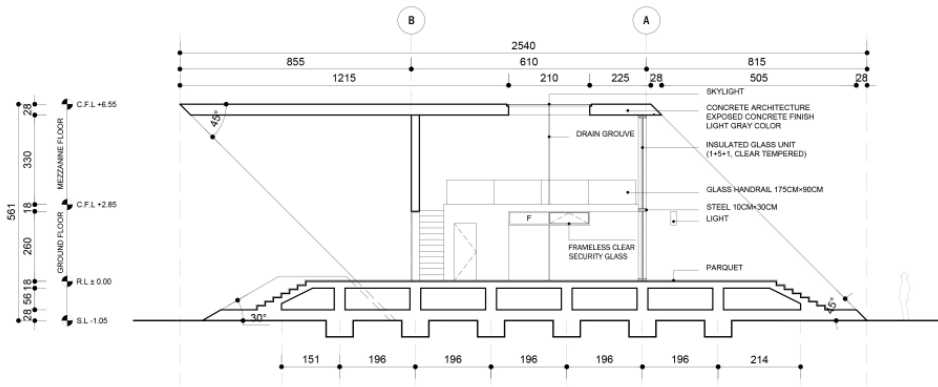
Building



Nestled along the pristine shores of Lebanon's southern coast, the Naqoura Chalet stands as a testament to the ingenuity of Adib Haydar Architects (ADB). With a solitary presence, it emerges as an architectural marvel amidst the rugged cliffs and endless sea horizons of this remarkable site. Covering a mere 130 square meters with a total floor area of 150 square meters, this chalet is a masterpiece that seamlessly merges with its breathtaking natural surroundings.



To honor and appreciate the sheer beauty of the Naqoura beach, where panoramic views of the Mediterranean Sea unfold in all their splendor, is a task of great importance. Placing architecture in such a pristine location requires more than just building; it demands a profound connection with nature.

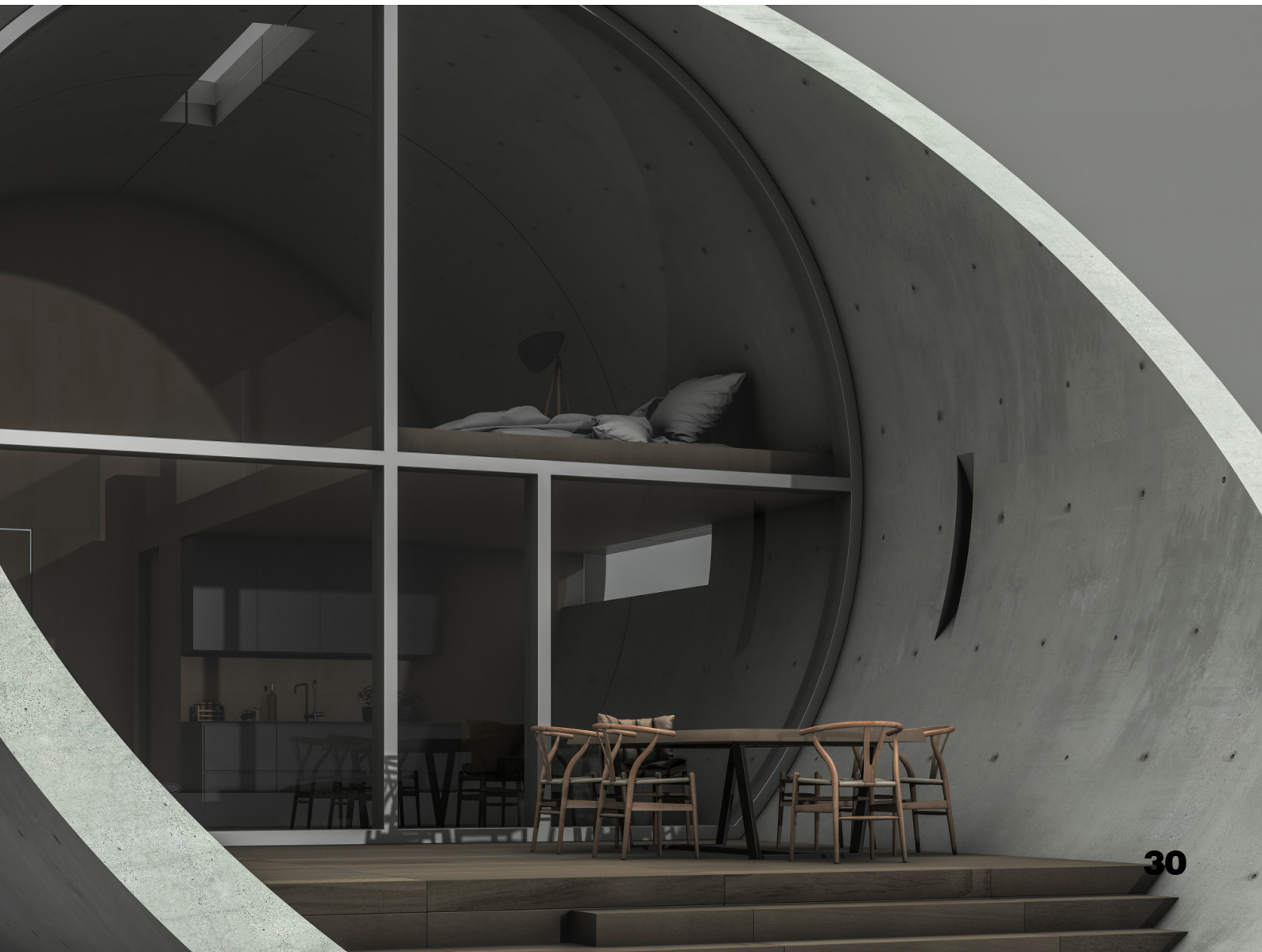


This philosophy guided Adib Architects to think differently and transform this chalet into a work of land art, a beacon that both complements and interacts with the coastal landscape. Our intention is to help visitors understand the beauty of the art that is displayed. In this way, art and architecture become one.

Meaning of Architecture

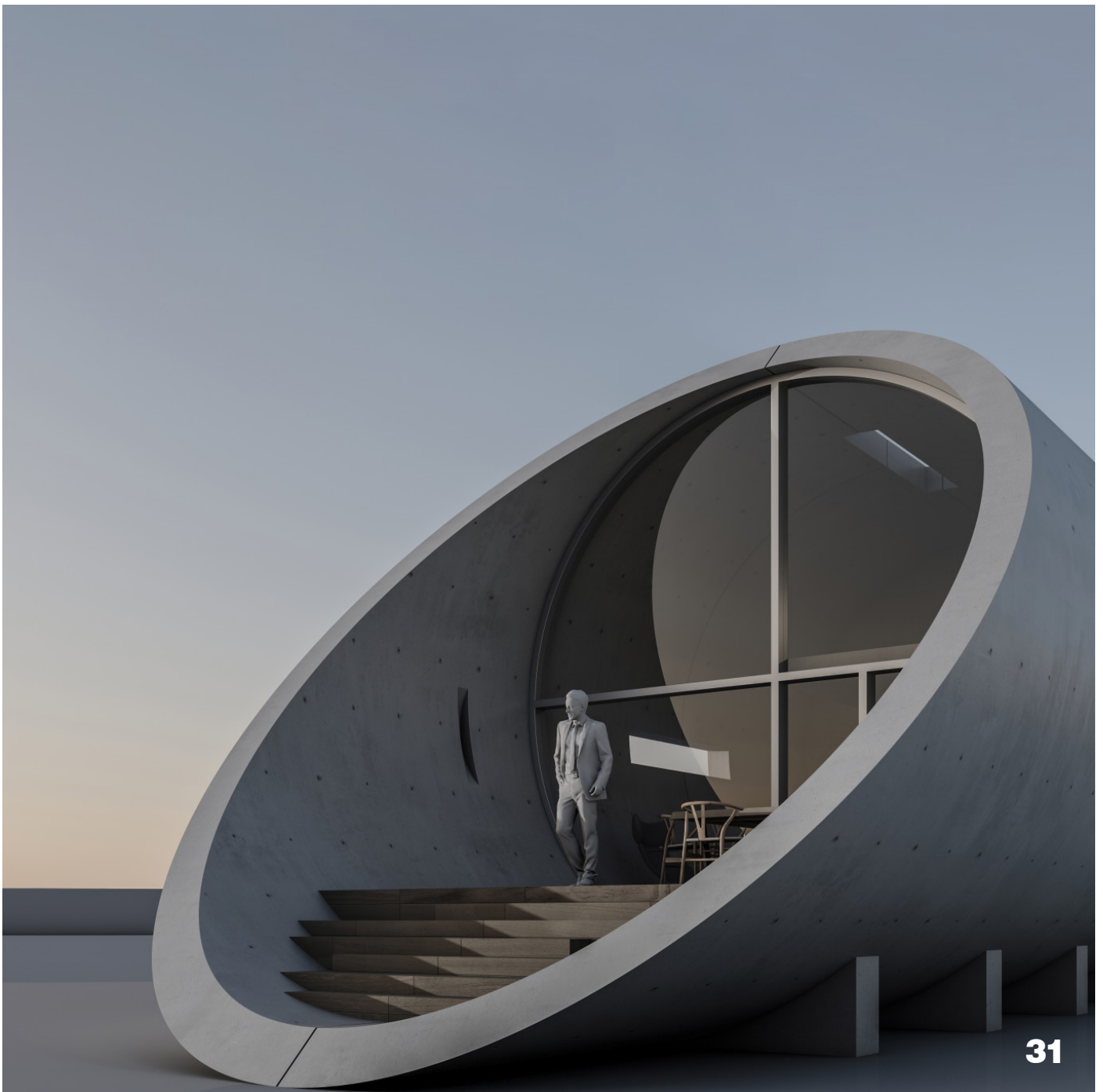
Adib Architects chose a simple yet striking voided and chamfered cylinder as the foundation of their design - a form that leaves minimal impact on the ground and natural site, akin to a boat gently resting on a beach. This positioning creates a captivating illusion, evoking the image of a vessel on the shore in an abstract form. Crafted meticulously in concrete with minimalist sensibilities, this form draws the attention of visitors and residents alike, inviting them to focus on the circular frame that frames the breathtaking views both indoors and outdoors.

Adib is perhaps at his strongest in small structures. His aesthetics may have evolved, but the architect remains faithful to the powerful geometric simplicity that has always been his signature style.



Concrete as Sculptural Expression

Concrete was chosen for its ability to transcend mere structural function and become sculptural, plastic, and space-forming. Adib's decision to limit materials and forms stems from the belief that these elements heighten the viewer's architectural experience, especially when they reach their most refined state of existence. The ultimate goal here is to underscore the architectural qualities of space and allow individuals to experience the spirit and beauty of nature through the lens of architecture.



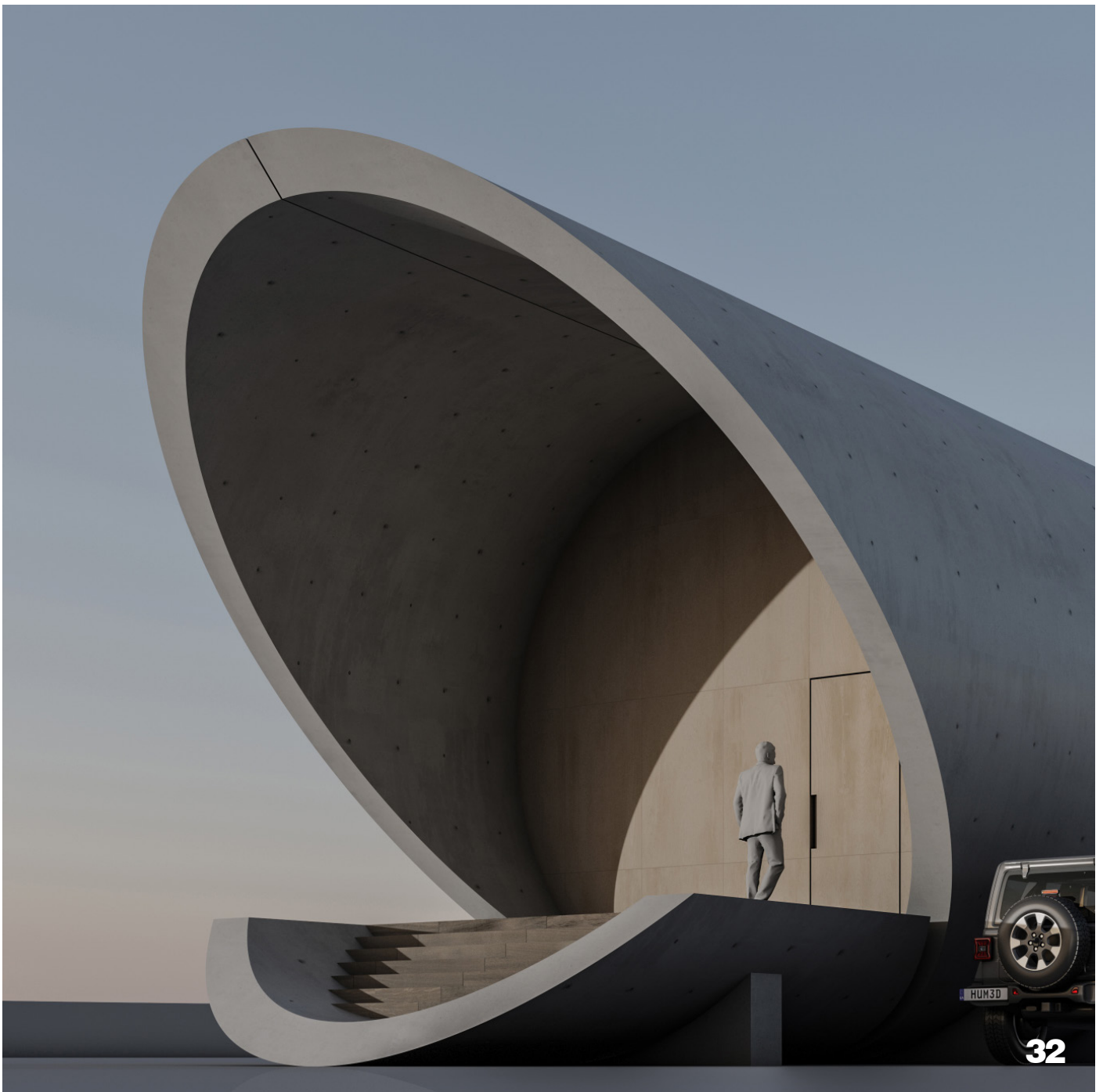
NAQOURA CHALET

Project

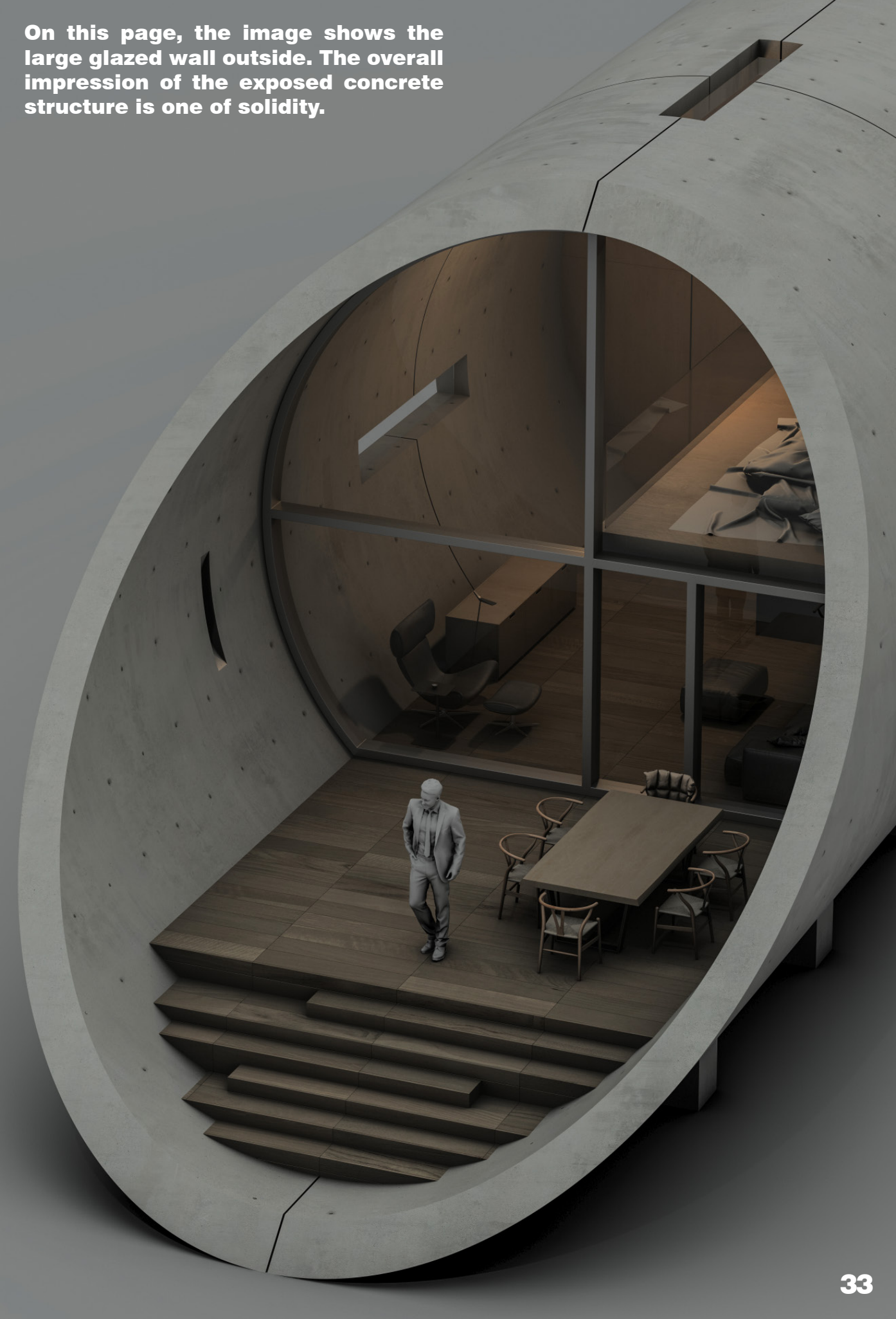
02



Right: This sketch by Adib Haydar shows the geometric composition with simple forms - cercle and ellipse to create the main entrance.



On this page, the image shows the large glazed wall outside. The overall impression of the exposed concrete structure is one of solidity.



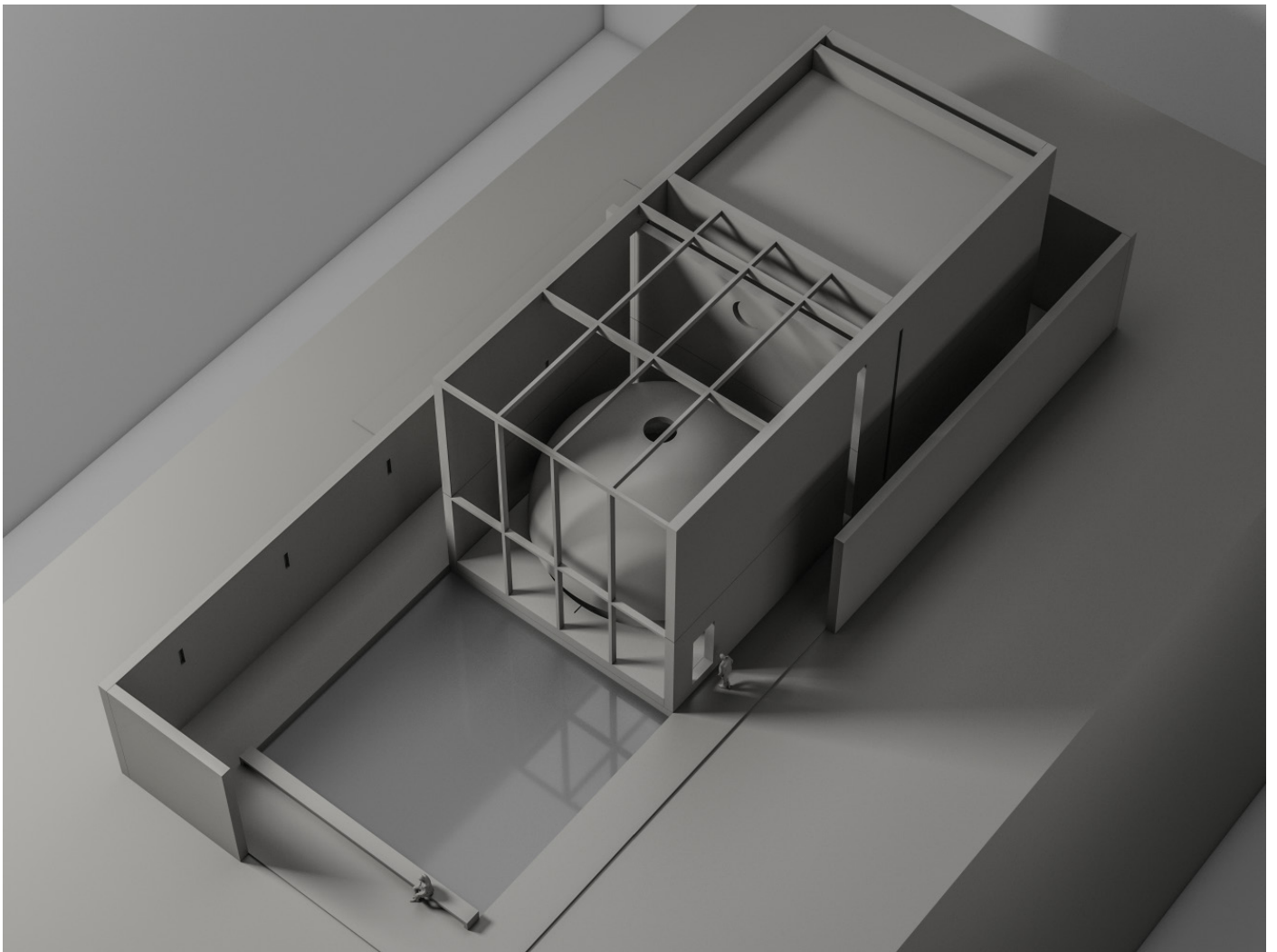
These are relatively small projects, but with a real intention to make visitors understand the beauty of the art displayed. Art, and Architecture become one under Adib's watchful eye. In these cases, architecture respects the surrounding landscape, making its mark with a solid presence without altering the beauty created by nature.





This 3D section vividly presents the intricate structural system of the Naqoura Chalet, where the concrete voided cylinder is artfully integrated into the ground, delivering a harmonious blend of both physical robustness and captivating visual aesthetics. Within this architectural depiction, you'll also find a captivating portrayal of the interior space, highlighting a spacious and visually stunning double-height void. The presence of the cylinder in this context not only underscores the architectural finesse but also introduces a contemporary reinterpretation of a vaulted concept within the bedroom area, adding a distinctive touch to the modern design.





MOSQUE OF SUSPENDED DOME

Naqoura - South Lebanon

MOSQUE OF SUSPENDED DOME

Project

SHAQRAA - SOUTH LEBANON

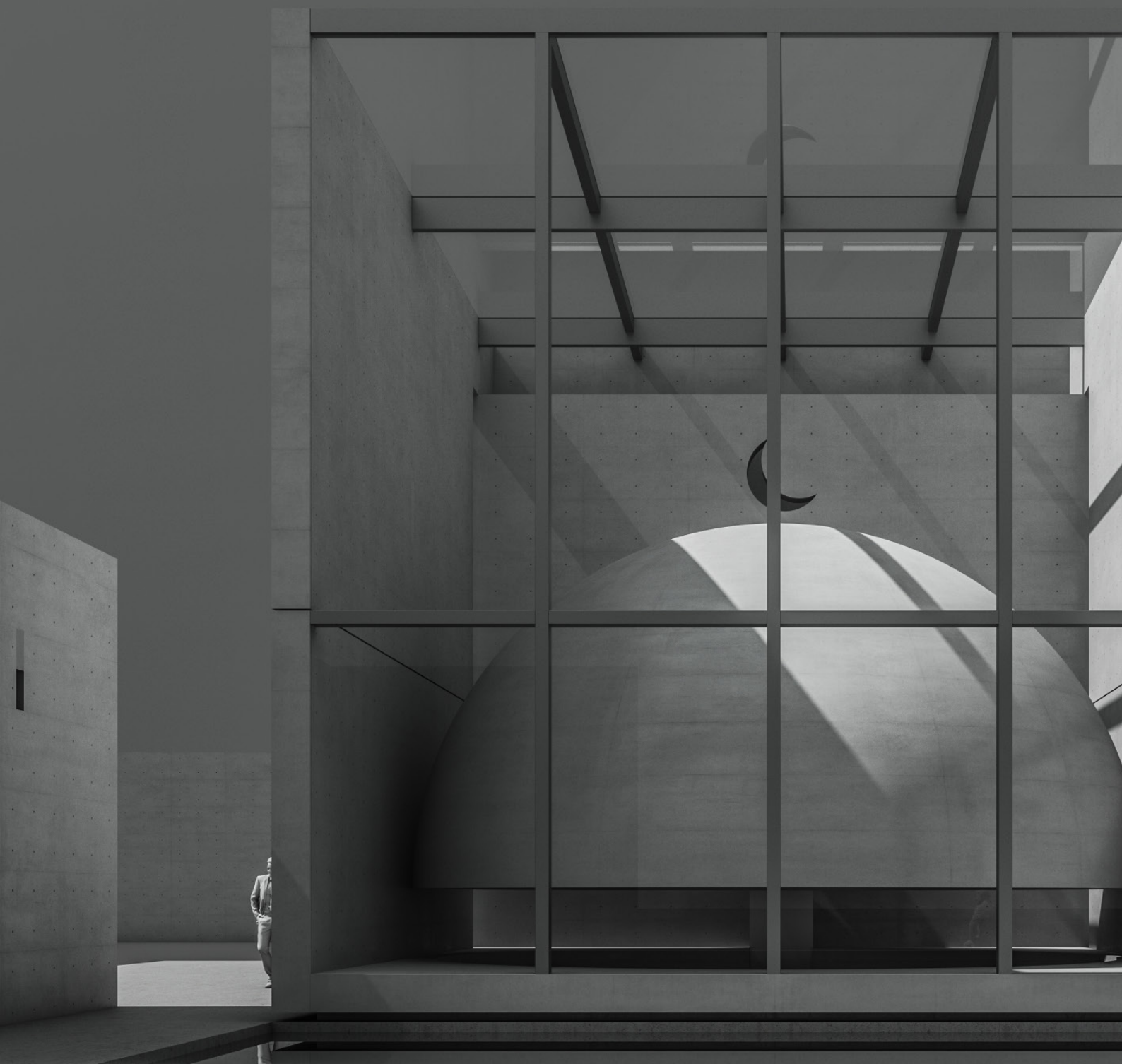
Location

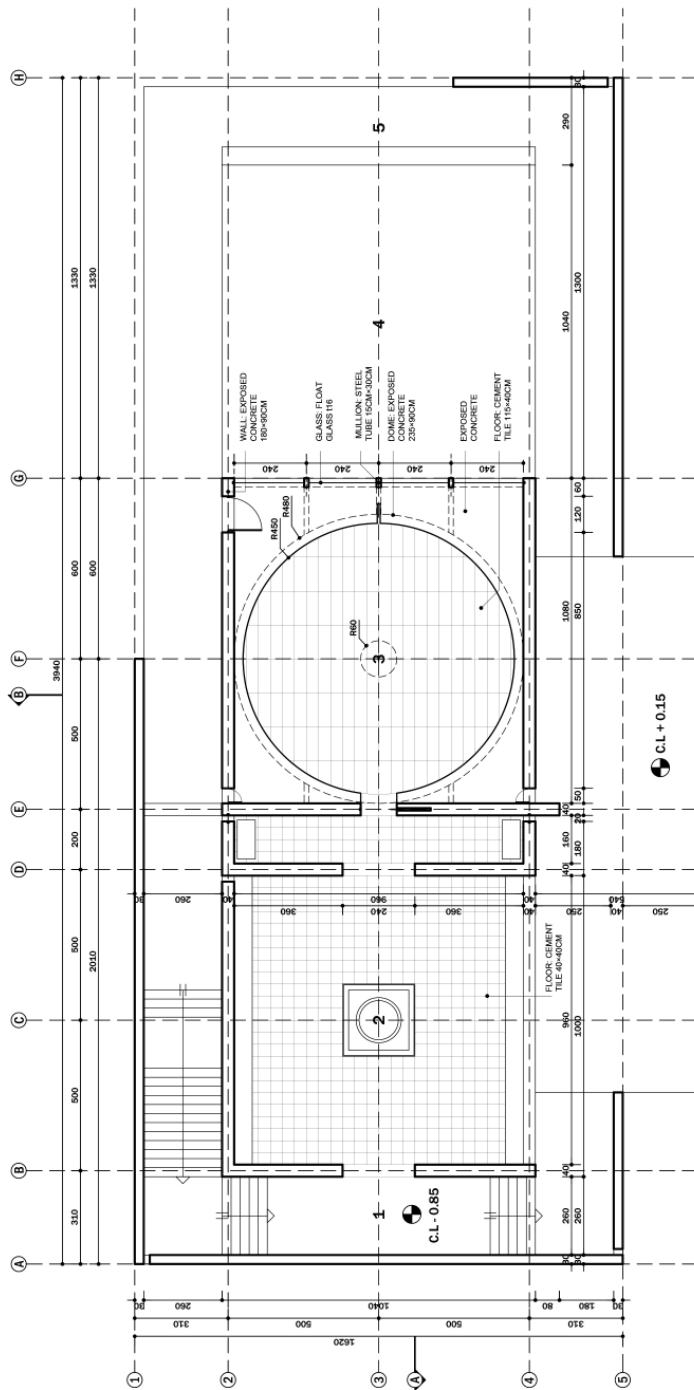
980m²

Floor Area

MOSQUE

Building





- 1: MAIN ENTRANCE
- 2: MOSQUE COURTYARD
- 3: PRAYER SPACE
- 4: WATER
- 5: REST AREA



Above: This drawing shows the ground floor plan of the Mosque of Suspended Dome, as well as the fundamentally simple geometric form of the main structure. The plan divided into three aligned squares: Al Finaa, Prayer Area, and Pond. The main materials employed are exposed concrete, steel sash windows both on the exterior and the interior.

ENT. S.L. ± 0.00

MOSQUE OF SUSPENDED DOME

Project

03

The use of authentic and real geometric forms, without the use of “ornaments,” gives the mosque its pure, sincere appearance, instilling tranquility and serenity in the worshipers. We do not exclude spiritual decorations with meaning and Islamic significance. We avoid those that are merely decorative and lack any depth or meaning, as they only serve to distract the worshiper.

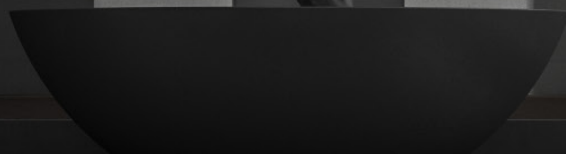
The choice of the square shape, historically symbolic in Islamic architecture representing the earthly world with its four directions, and the dome representing the sky and the celestial realm, was deliberate. The decision to suspend the dome, reminiscent of the sky raised without pillars, allows people to feel the proximity of the heavens and their envelopment during prayer. It creates a small world where the connection between the earth and the sky, the material and the spiritual, is stripped away. Light filters through, allowing the worshiper to feel spirituality, hope, and divine aspirations. This light symbolizes the guidance and sacred illumination that dispels the darkness produced by the square void surrounding the individual.

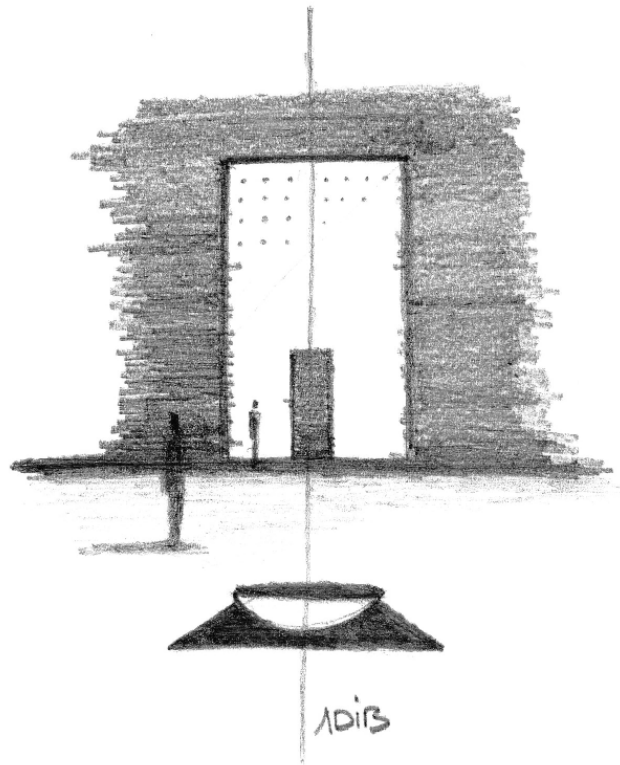


The solid concrete walls of the Mosque of Suspended Dome, entry prepare visitors to enter the Finae, where light is frequently present.



During the Midday Dhuhr prayer, the radiant natural light pouring in through the skylight illuminates the main entrance, extending a warm and welcoming invitation to all visitors to step into the prayer room.





Transitioning from the worldly void, representing “life,” to the sacred void, representing the “prayer room,” begins with descending the stairs, invoking humility and detachment, making one feel smaller and thus shedding arrogance. Then, entering the small courtyard of the mosque, lit by natural light, where ablution takes place. The light seeping into this space contrasts with the darkness, guiding the way to the illuminated entrance of the prayer room. It marks the transition point from one world to another.

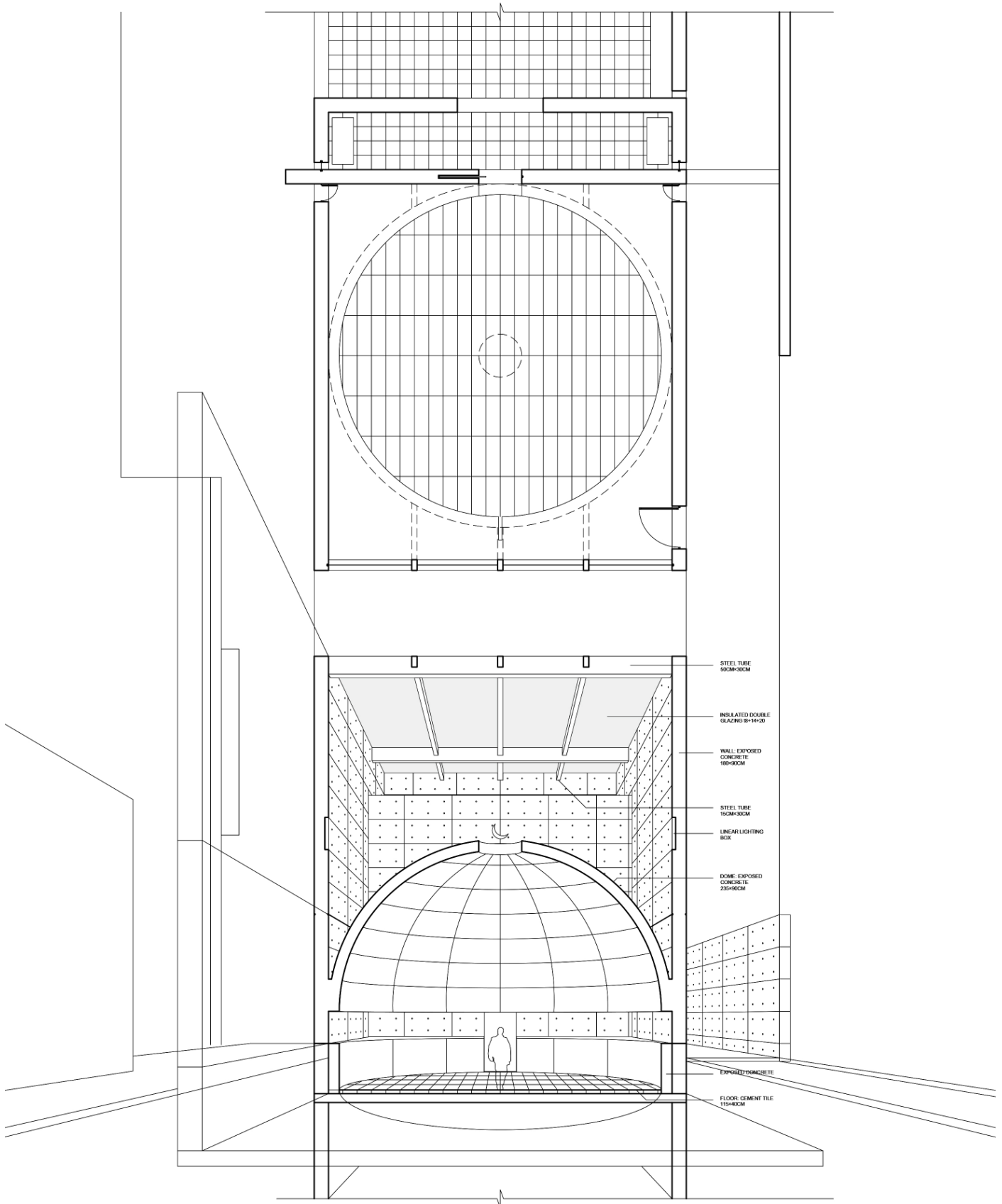
The experience of the sacred void beneath the dome begins. The simplicity and purity of the space direct the worshiper’s focus towards the light, providing tranquility, culminating in prayer under the dome’s celestial expanse. This gradual transition profoundly affects the visitor spiritually, starting the message of the void.

MOSQUE OF SUSPENDED DOME

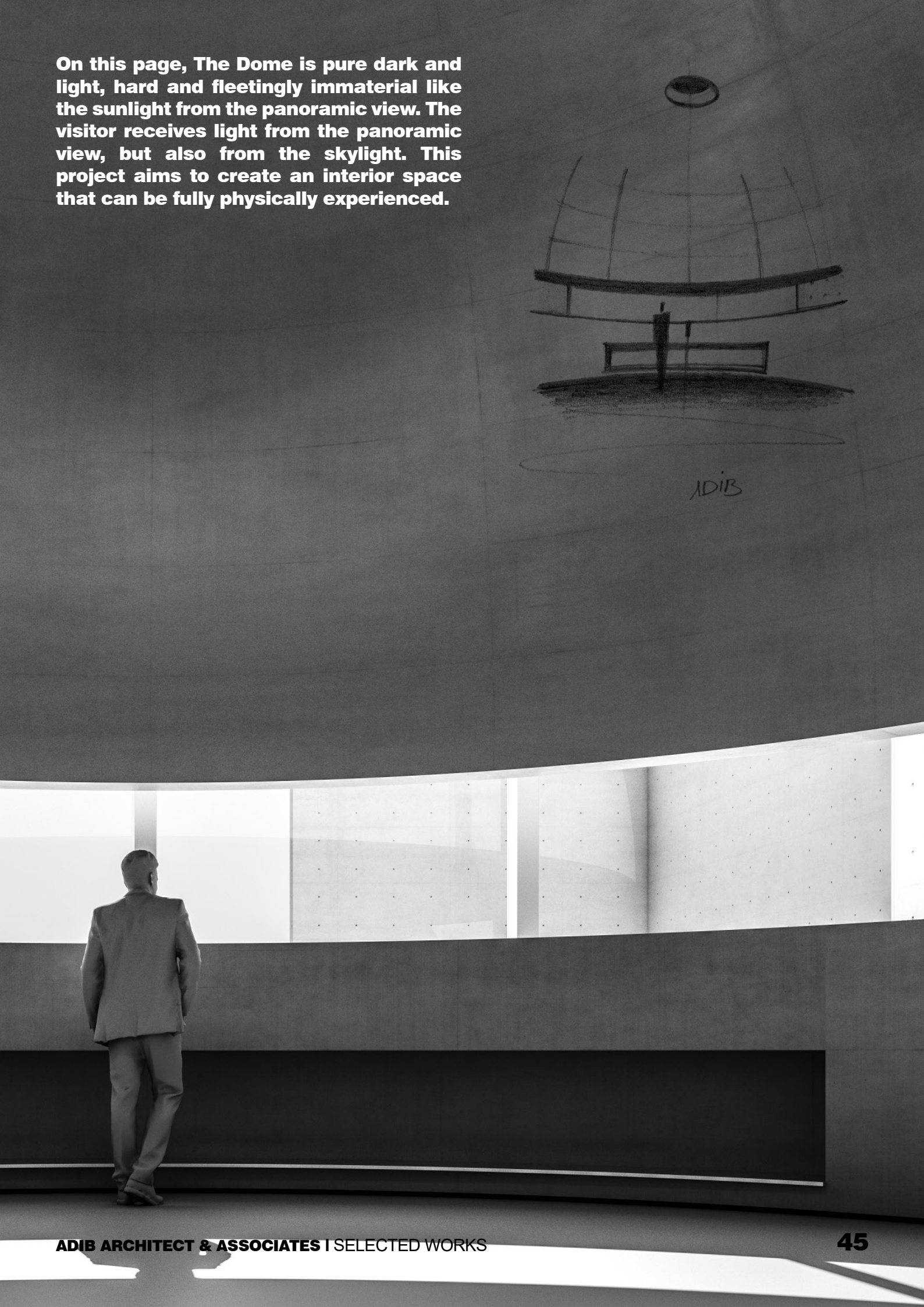
Project

03

Below: An Axonometric drawing show the powerful geometric simplicity that has always been his signature style.



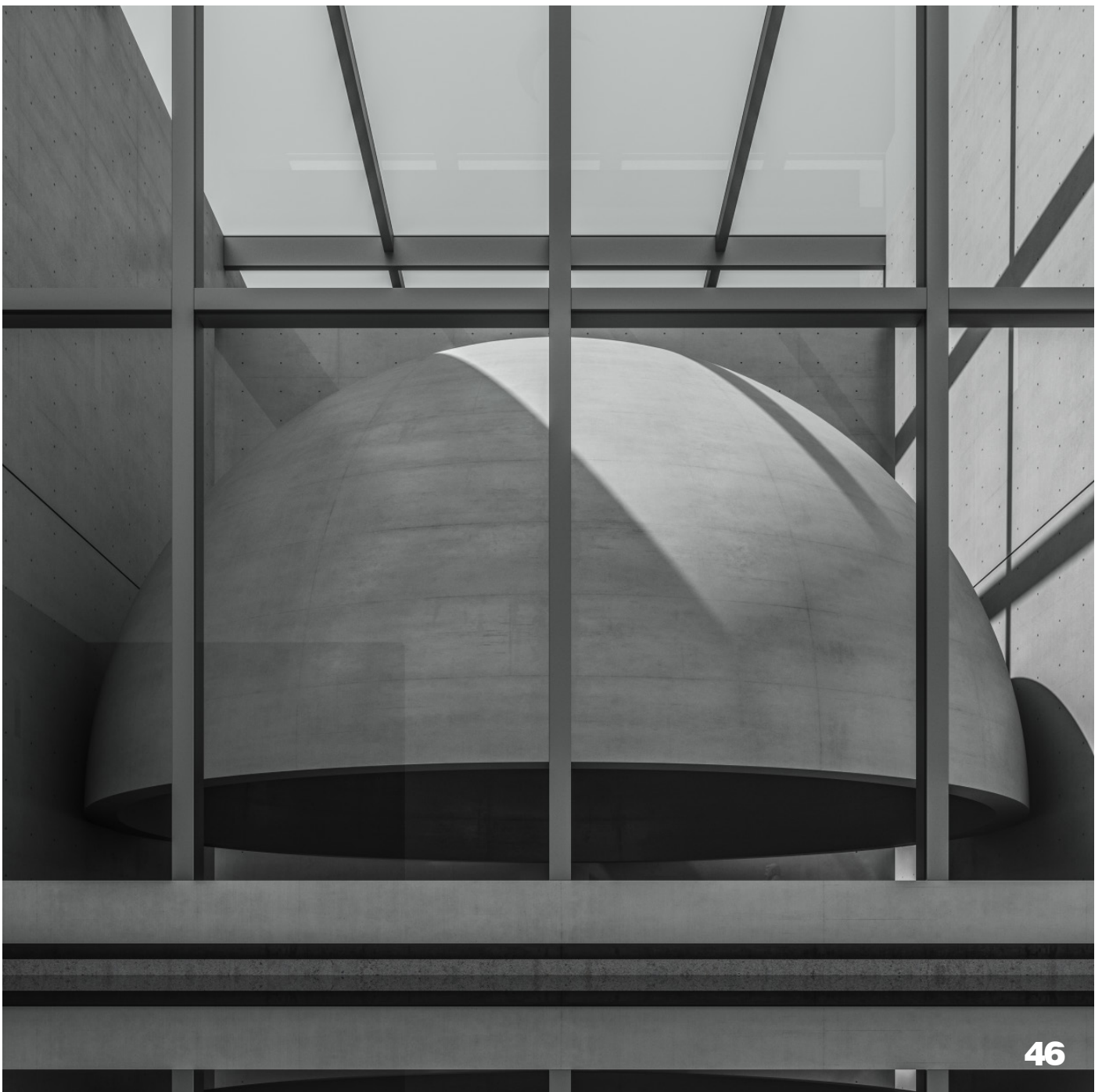
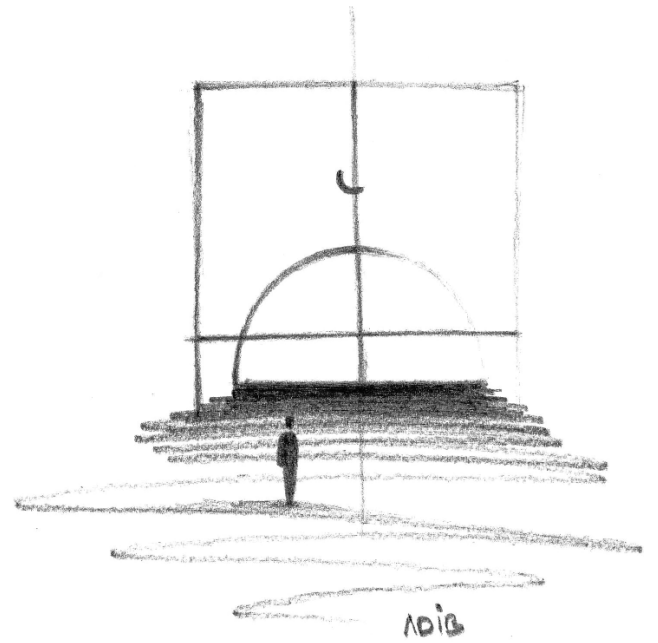
On this page, The Dome is pure dark and light, hard and fleetingly immaterial like the sunlight from the panoramic view. The visitor receives light from the panoramic view, but also from the skylight. This project aims to create an interior space that can be fully physically experienced.



MOSQUE OF SUSPENDED DOME

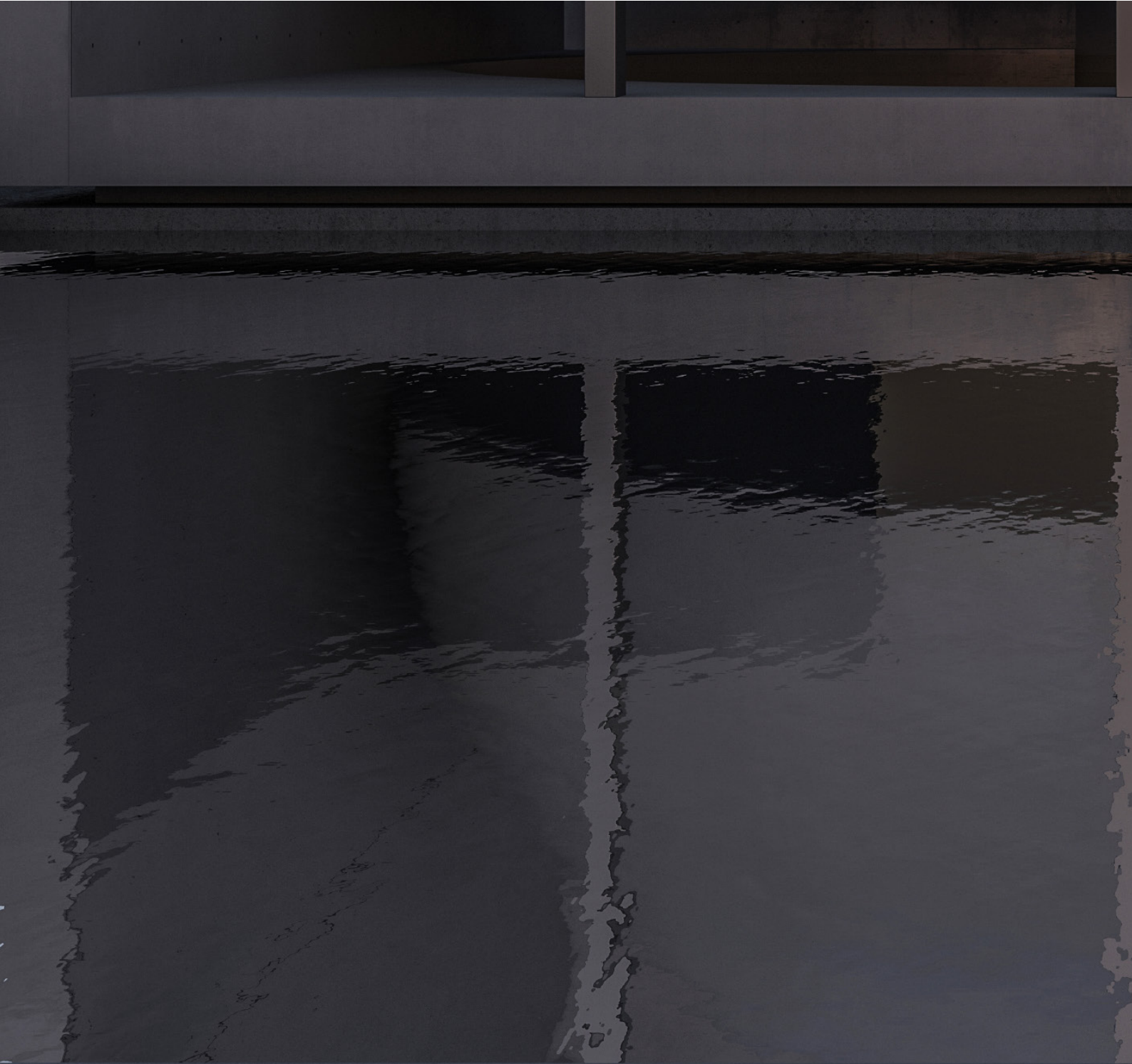
Project

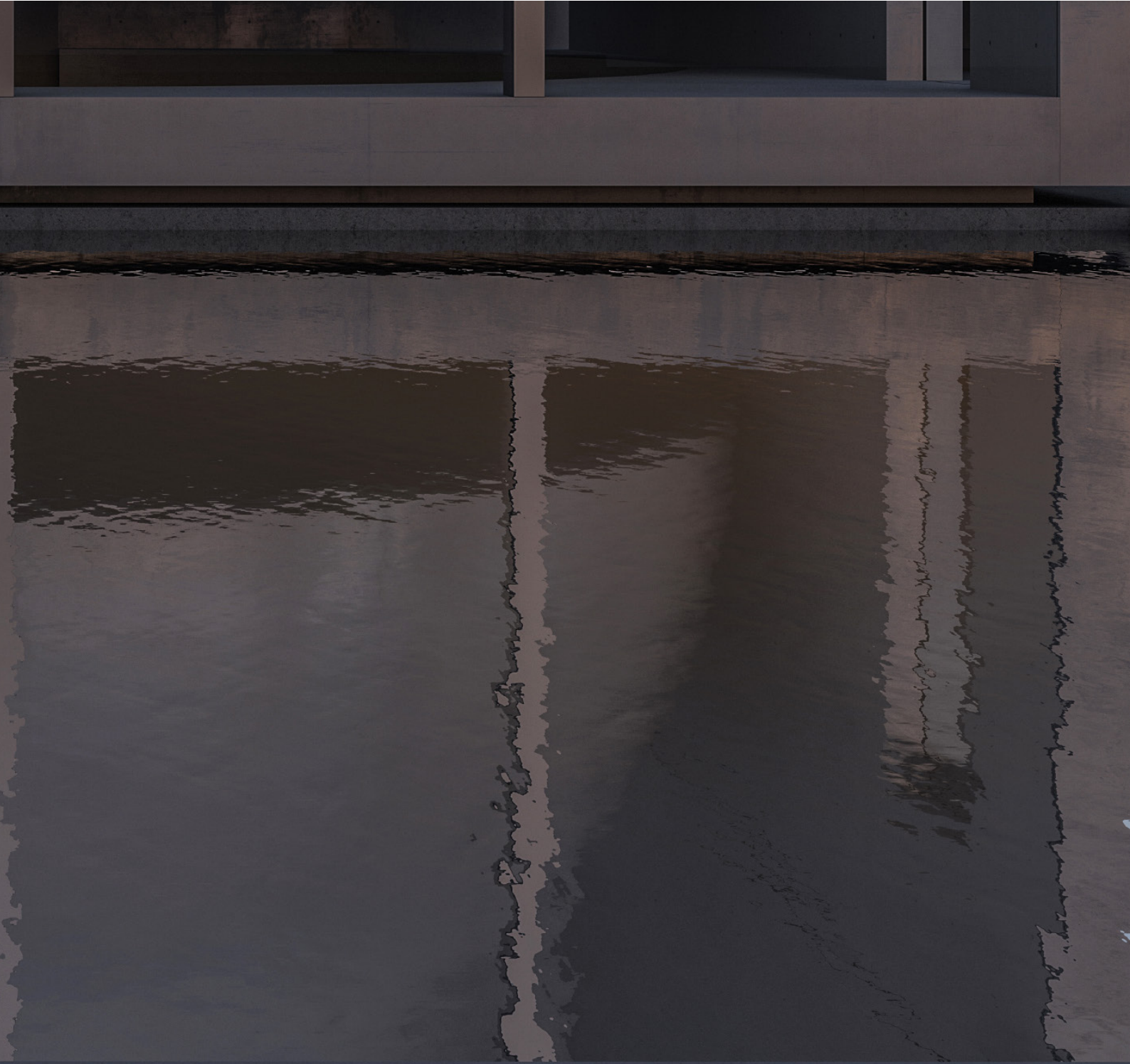
The suspended dome floats between the three walls of the cube within the cube's void, resembling a bird in the sky. This architectural concept simplifies the traditional notion of a mosque where the cube represents the earth and the dome represents the sky. The architect aims to express the human experience between earth and sky, between this world and the hereafter, symbolizing paradise. Inside the void, the worshiper feels the effect of the light emanating between the suspended dome and the ground, enhancing spirituality and elevating towards the celestial world.





Below: As night falls, the real lightness of the architecture is felt. The structure appears to float on its reflecting pond. Adib's strong geometric dissolve into the reflections in the pond. A reflecting pond abstractly links architecture and untamed nature. Adib uses water to modulate light, express the presence of nature, and enrich the palette of textures beyond the range of construction materials.





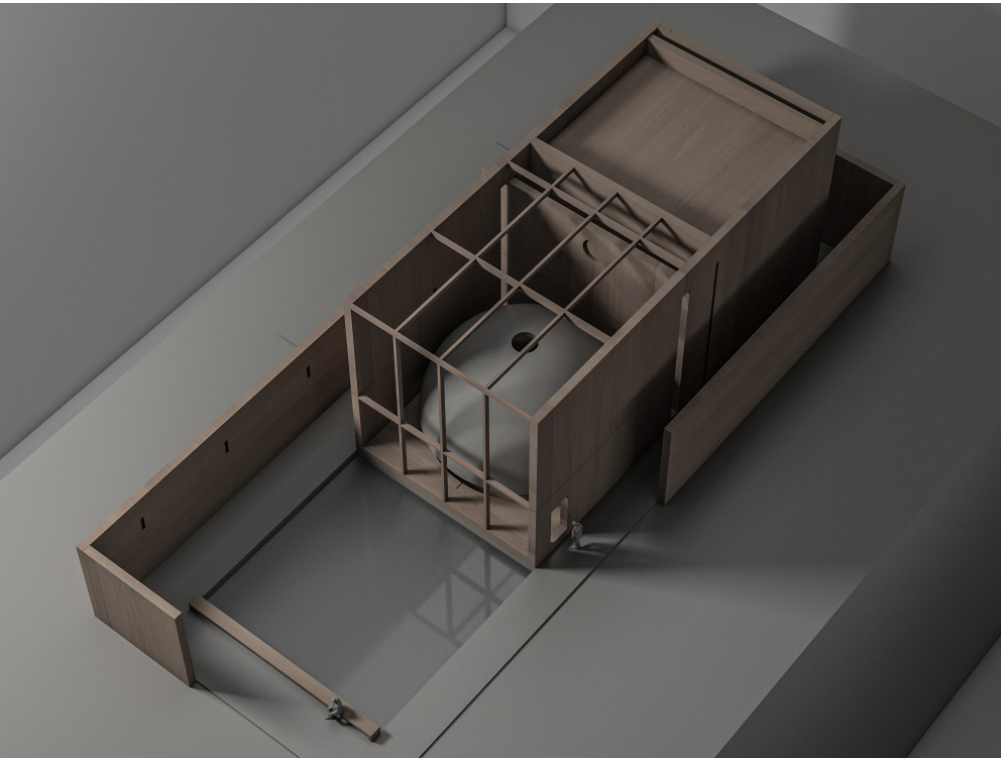
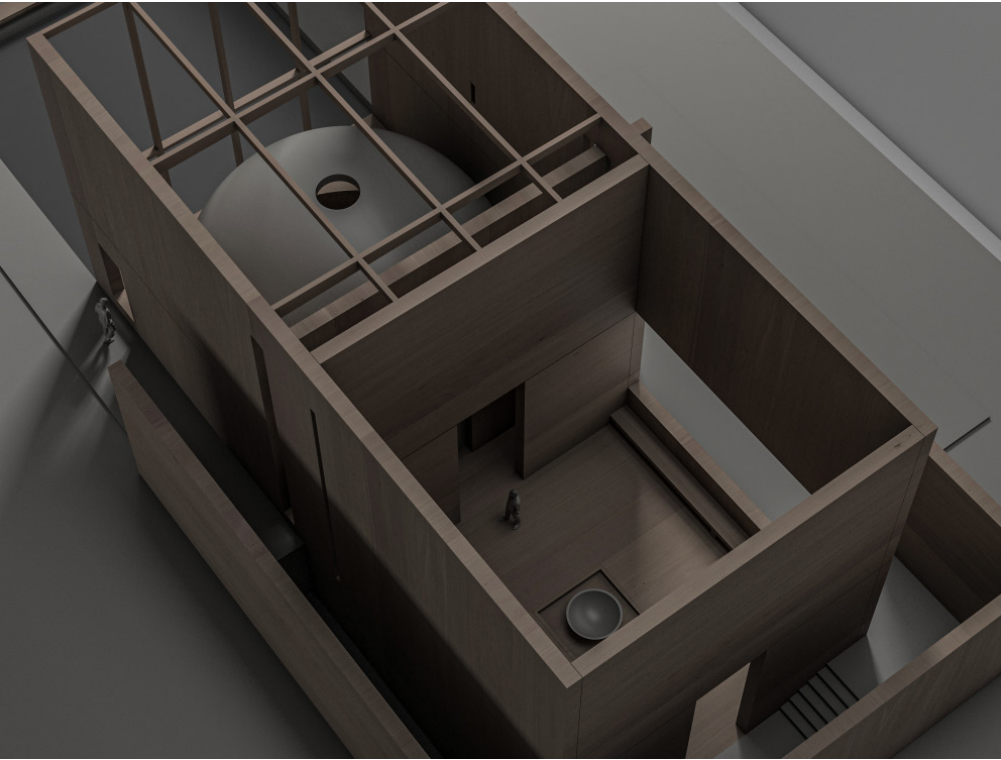


The suspended dome between the three walls of the cube seems to soar within the cube's space, resembling the sky. This architectural concept reflects the traditional idea of a mosque, where the cube represents the earth and the dome represents the sky. Adib aims to convey the human experience between the earth and heaven, between this world and the afterlife, which is paradise. Inside the space, the worshiper feels the effect of the light emanating between the suspended dome and the ground, giving them a sense of spirituality and ascension towards the higher realm. The architecture here carries deep meanings of Islamic prayer, allowing the worshiper to transcend the earthly realm in all four directions through prayer.

**ADIB ARTFULLY COMPOSES AMBIANCE,
MERCING LIGHT AND ARCHITECTURE.
THE SHINING DOME, GLIMPSED THROUGH
CONCRETE FRAME, FORMS A CAPTIVATING SCENE
WITH ENCHANTING SHADOWS.**

03

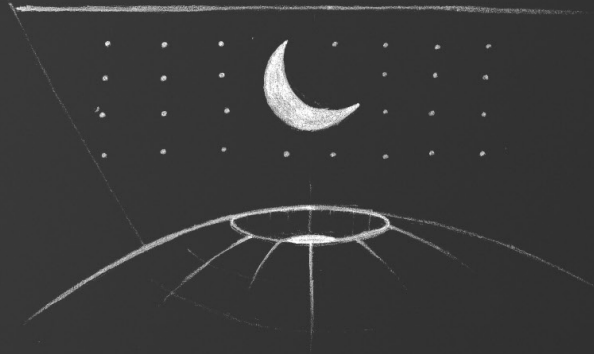




Above: Everywhere in this very strong design, the visitor's movements are guided and their points of view orchestrated, to make them feel the full force of the Mosque of Suspended Dome

Adib has carefully crafted a specific path for the worshiper to experience the transformation in their spiritual state as they move towards the prayer hall. This complete sensory and spiritual experience gives profound human meaning to this seemingly modest project, endowing it with uniqueness and value. It reaches into your inner self, communicating with your body and soul through a simple and pure architectural language that enriches the mind.

In this night scene, the idea becomes clearer as the soaring dome enveloped by light conveys the concept of the mosque. The interplay of light and shadows on the dome elevates it to a work of art in its own right.



4 CUBES HOUSE

Project

04

SOUTH LEBANON

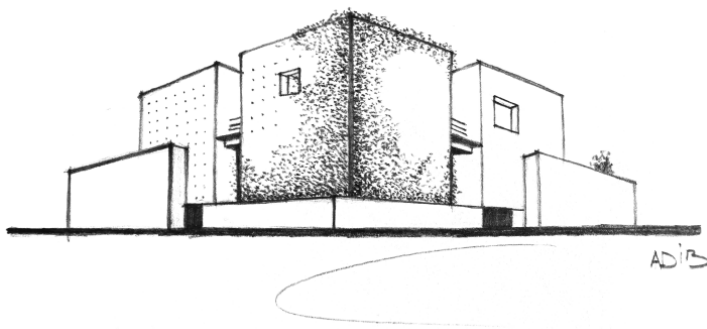
Location

315m²

Floor Area

PRIVATE RESIDENCE

Building



Above: This sketch by Adib shows a simple composition of 4 cubes.

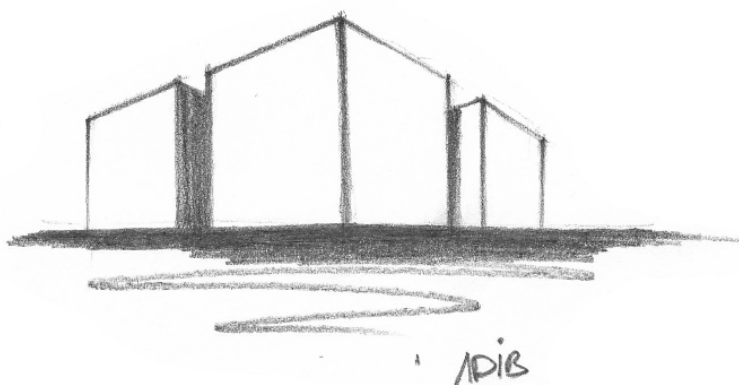
Adib skillfully employs the vocabulary of Modernism to create innovative architectural expressions, challenging the notion that geometric design belongs solely to the past. His architectural style is marked by pristine forms, clear outlines, and bold spatial compositions. The ambiance within Adib's spaces exudes tranquility, evoking the serene atmosphere often found in Mediterranean houses, notably due to the incorporation of natural elements, particularly in the form of patios.

The design concept artfully balances the need for privacy within living spaces and the desire for communal interaction. This balance is achieved through thoughtfully crafted common areas like patios and terraces, providing inhabitants with both secluded retreats and inviting spaces for social gatherings and companionship.

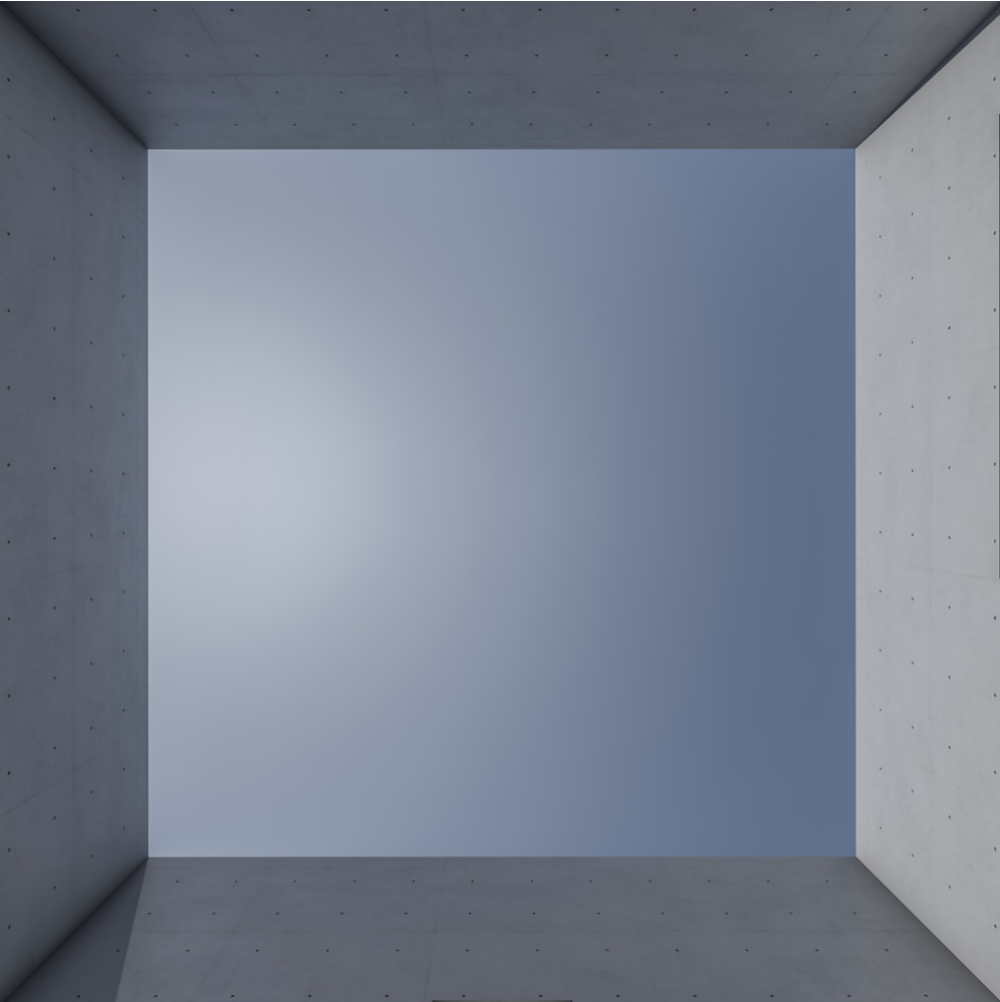
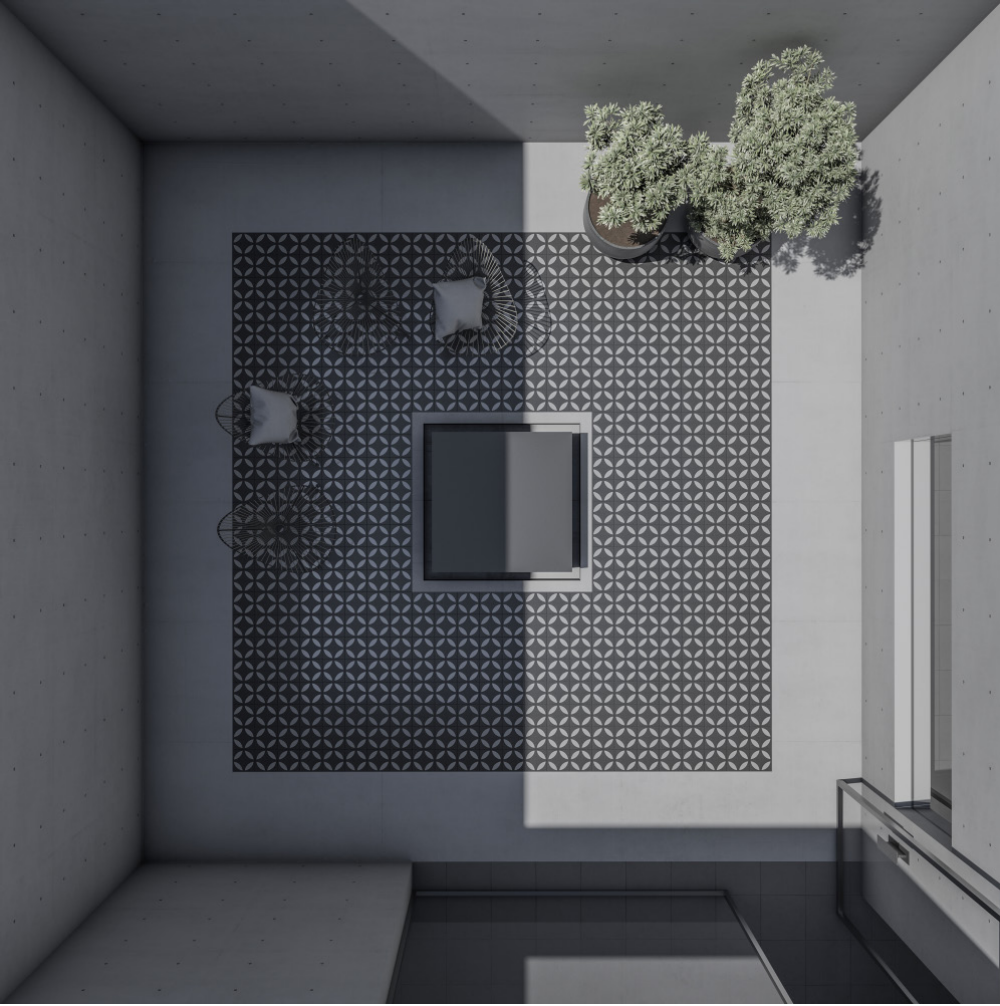


Above, A contrast between the exterior stone wall and the much smoother concrete interior, gives a sense of calm or perhaps of spirituality to the space.

Four concrete cubes in a grid design establish consistency and balance, shaping a distinct identity for a new house. These cubes serve as singular functional spaces, including patios, living areas, bedrooms, and kitchens, promoting interaction, privacy, and a connection to nature.

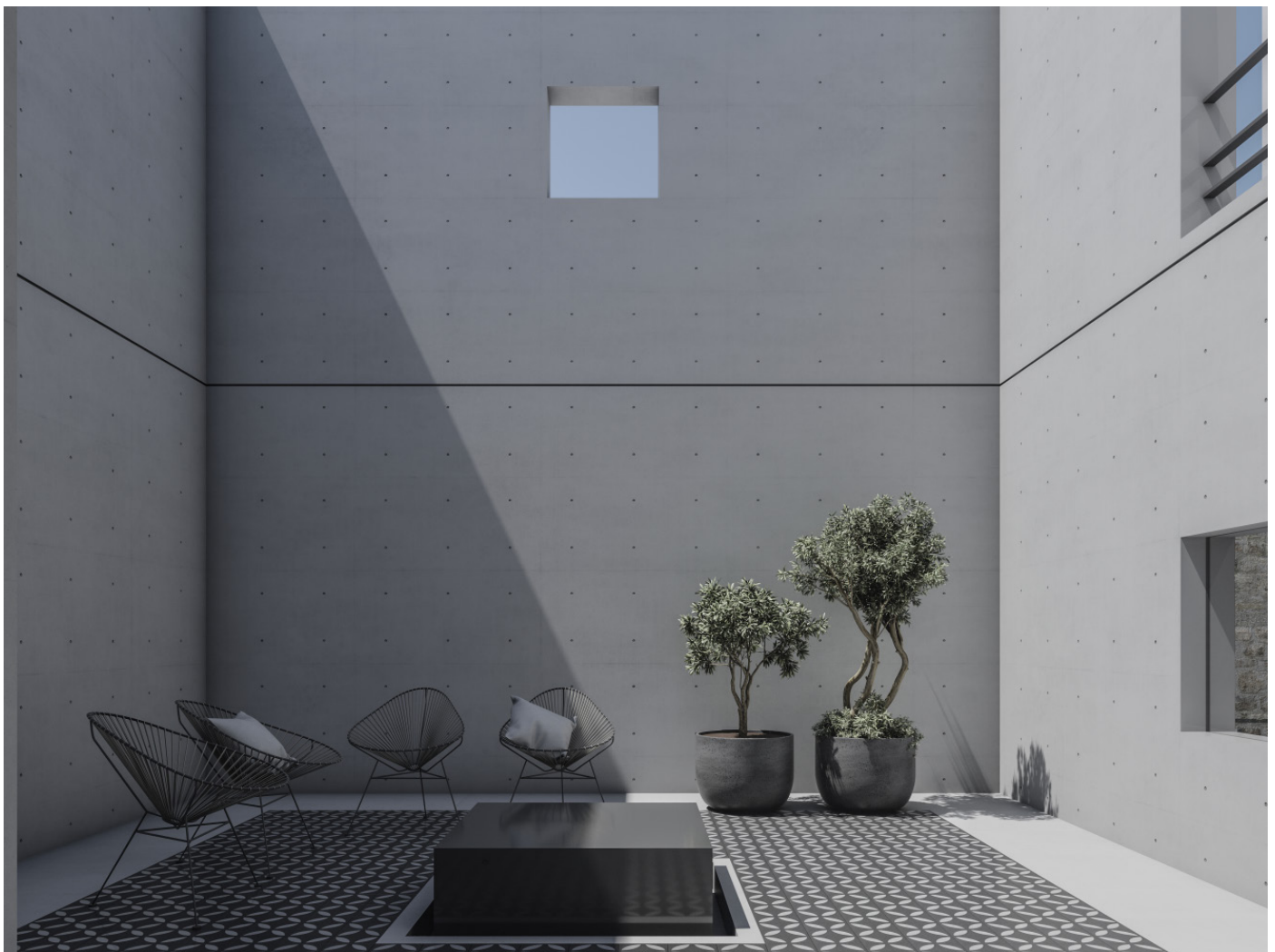






Below: The courtyard, which unveils a unique facet of nature each day, serves as the focal point of life within this house, acting as a conduit for introducing light, wind, rain, and various other natural elements. Sunlight infiltrates the interior, casting intricate shadows upon the patio and its surrounding walls. This interplay of light adds a dramatic dimension to the aesthetics, while the gentle caress of the wind and the rhythmic patter of rain infuse vitality into daily activities within the home.

Adib firmly believes that integrating nature within a house is both appropriate and essential. His meticulous attention to detail aims to exemplify the harmonious relationship between architecture and the natural world.







RESIDENTIAL - COMMERCIAL CENTER
South Lebanon (2019)



RESIDENTIAL - COMMERCIAL CENTER

Project

BORJ QALAOUIYE - SOUTH LEBANON

Location

1200m²

Floor Area

MULTI-FUNCTIONAL

Building

This structure, boasting a floor area of 1200 sqm, is situated in Borj Qalaouiye, South Lebanon. The Center is ingeniously divided into two asymmetric blocks, with a slender vertical element gracefully bridging the gap between them. Within the soaring 12-meter-high space, the ground floor comprises seven double-volume shops, serving as the main entrance to the apartments. Additionally, the first floor features two apartments with varying sizes. The primary materials employed include exposed concrete and steel sash windows on the exterior. The central challenge of this project lies in maintaining harmony and unity between two distinct blocks in terms of both area and function, as it combines commercial space on the ground floor with residential apartments on the first.







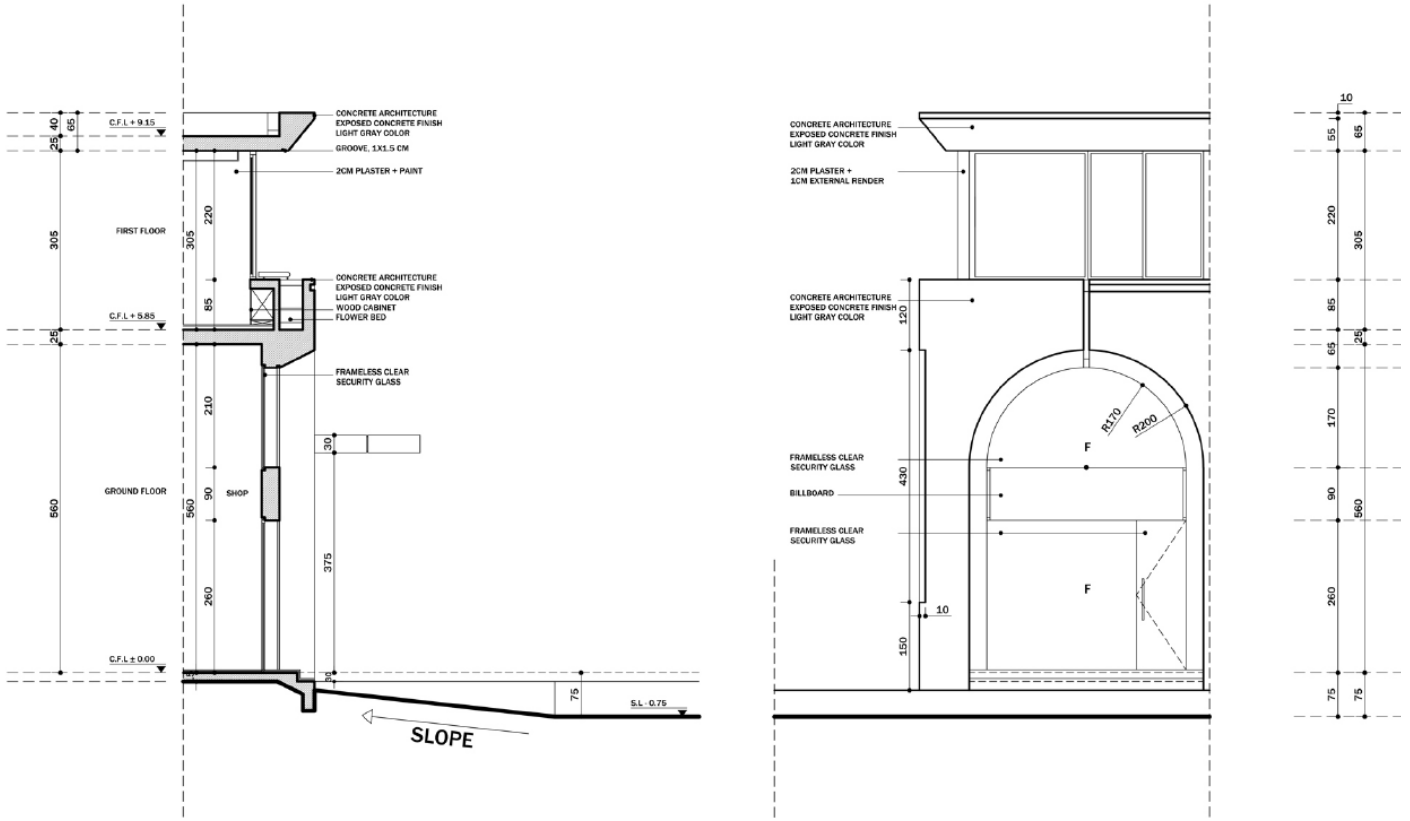
es

Mf

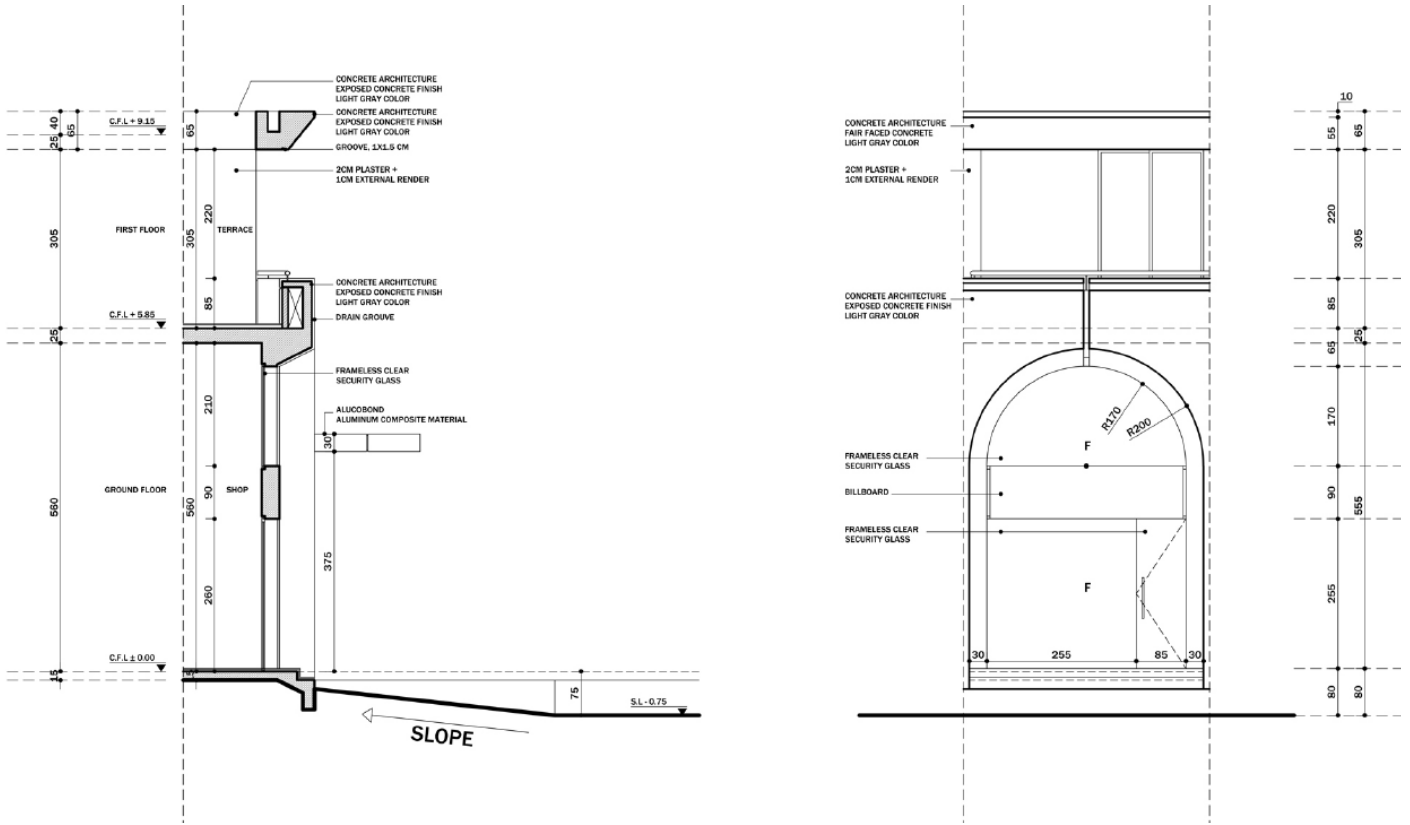
RESIDENTIAL - COMMERCIAL CENTER

Project

05











ONE CUBE HOUSE

South Lebanon

ONE CUBE HOUSE

Project

06

SOUTH LEBANON

Location

450m²

Floor Area

PRIVATE RESIDENCE

Building



The building comprises a cubic volume, strategically positioned at the center. At night, the living room and master bedroom on the first and second levels are beautifully illuminated, providing a captivating view from both the exterior and the terraces.

Despite the apparent solidity of the concrete walls, the house allows ample light to permeate its interior and offers captivating views that keep the owners in tune with the changing seasons. It frames the openings, rather than the other way around, yet this bold architectural choice echoes the fundamental geometry of the house, rooted in the initial design of a cube-shaped block. This design allows for the admission of natural light to the lower level.

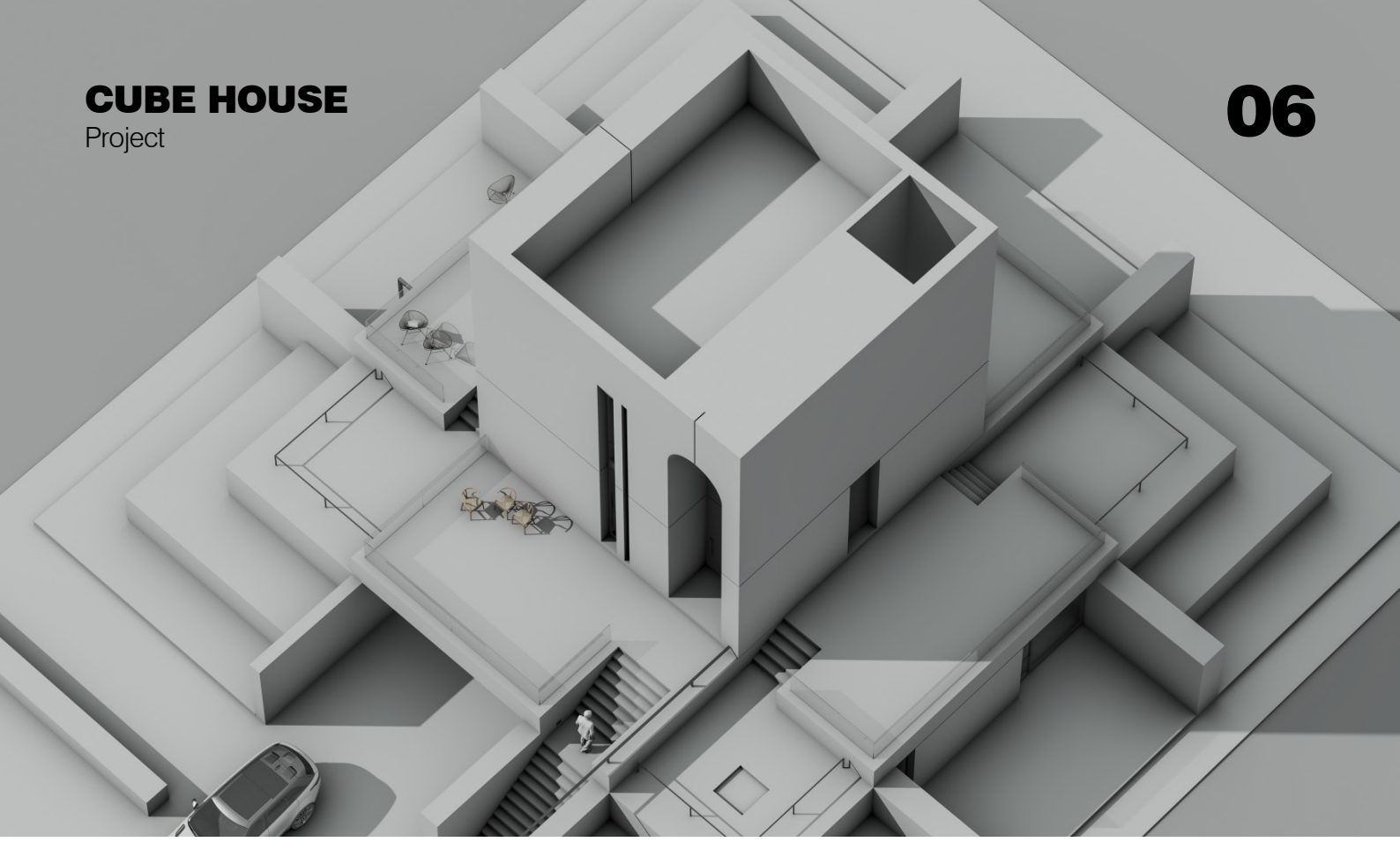
ONE CUBE HOUSE

Project



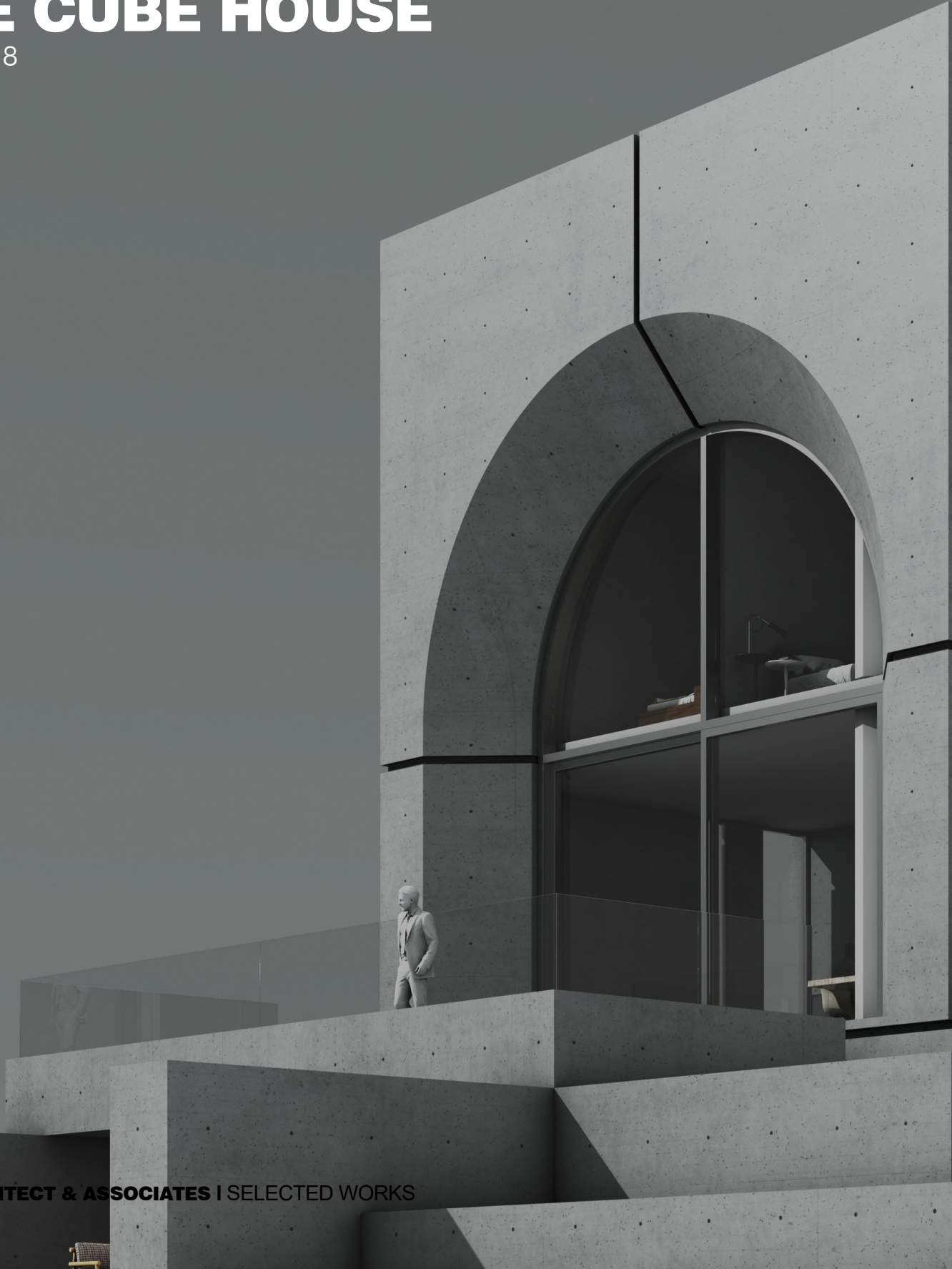






ONE CUBE HOUSE

2017-2018





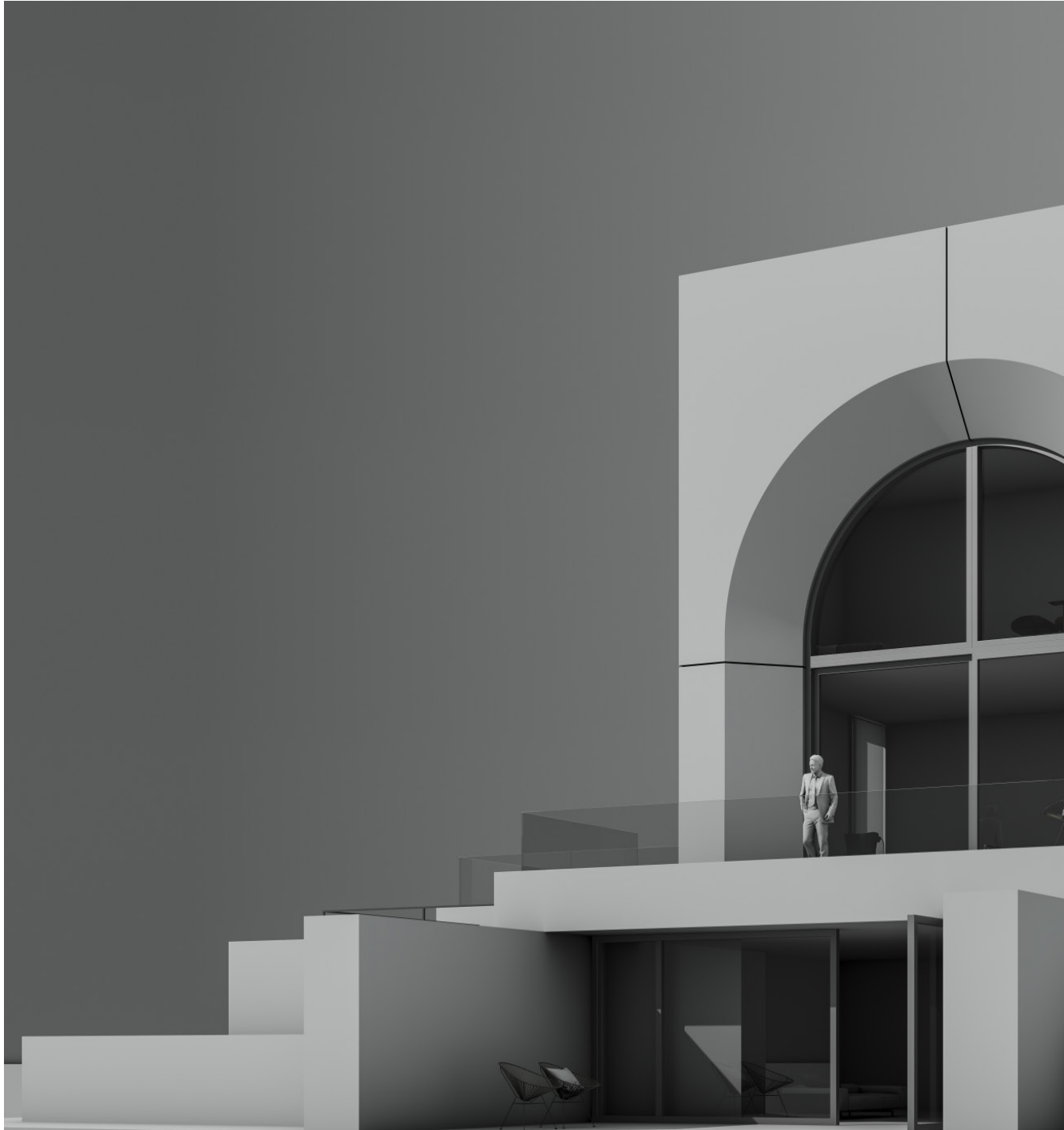


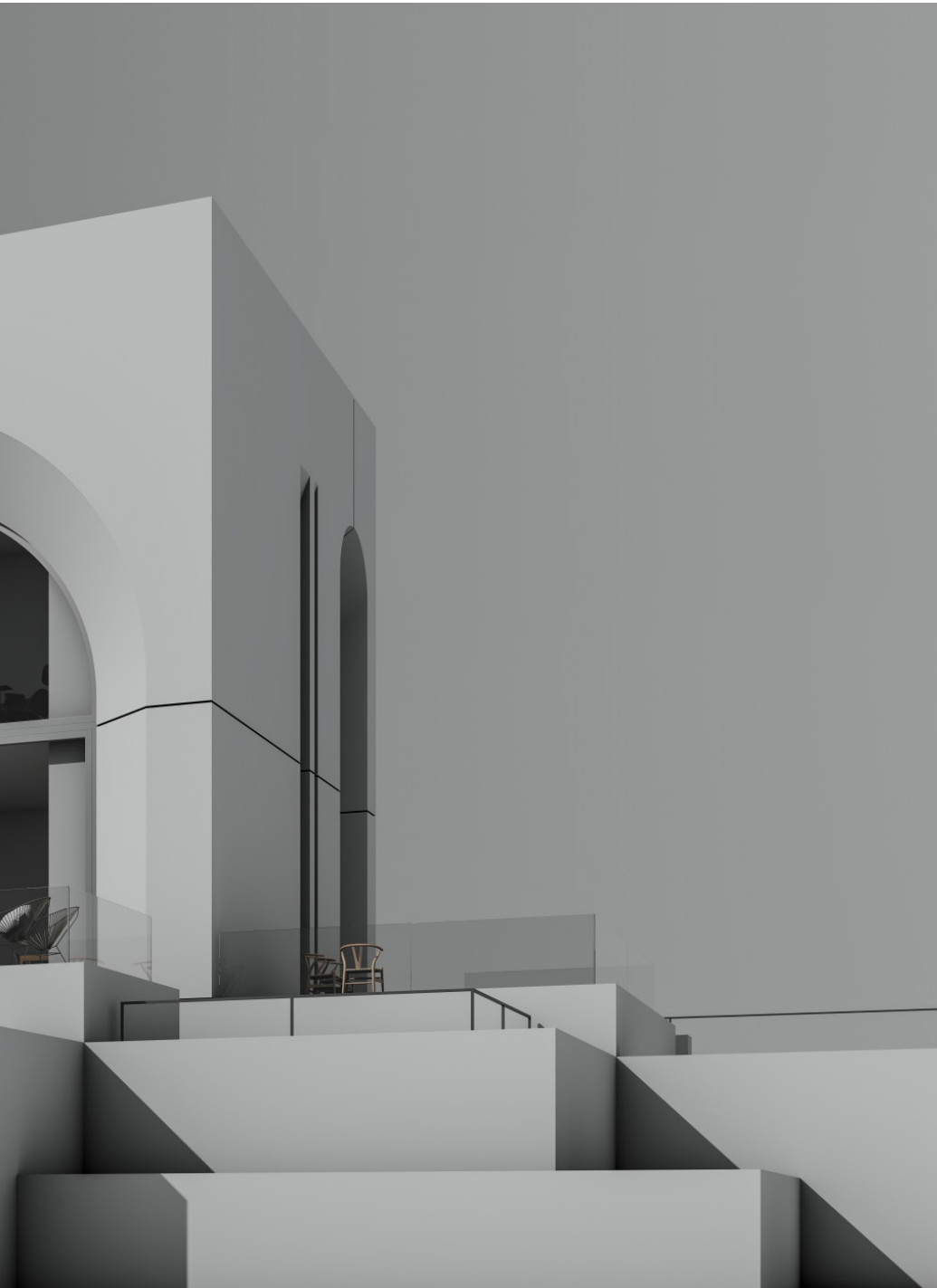
Simple, strong geometry can be understood and appreciated anywhere in the world. Everywhere in this very strong design, the visitor's movements are guided and their points of view are orchestrated, to make them feel the full force. Below: The most spectacular open view is reserved for the upper levels (living area and master bedroom).



ONE CUBE HOUSE

Project





CIRCLE SHADE

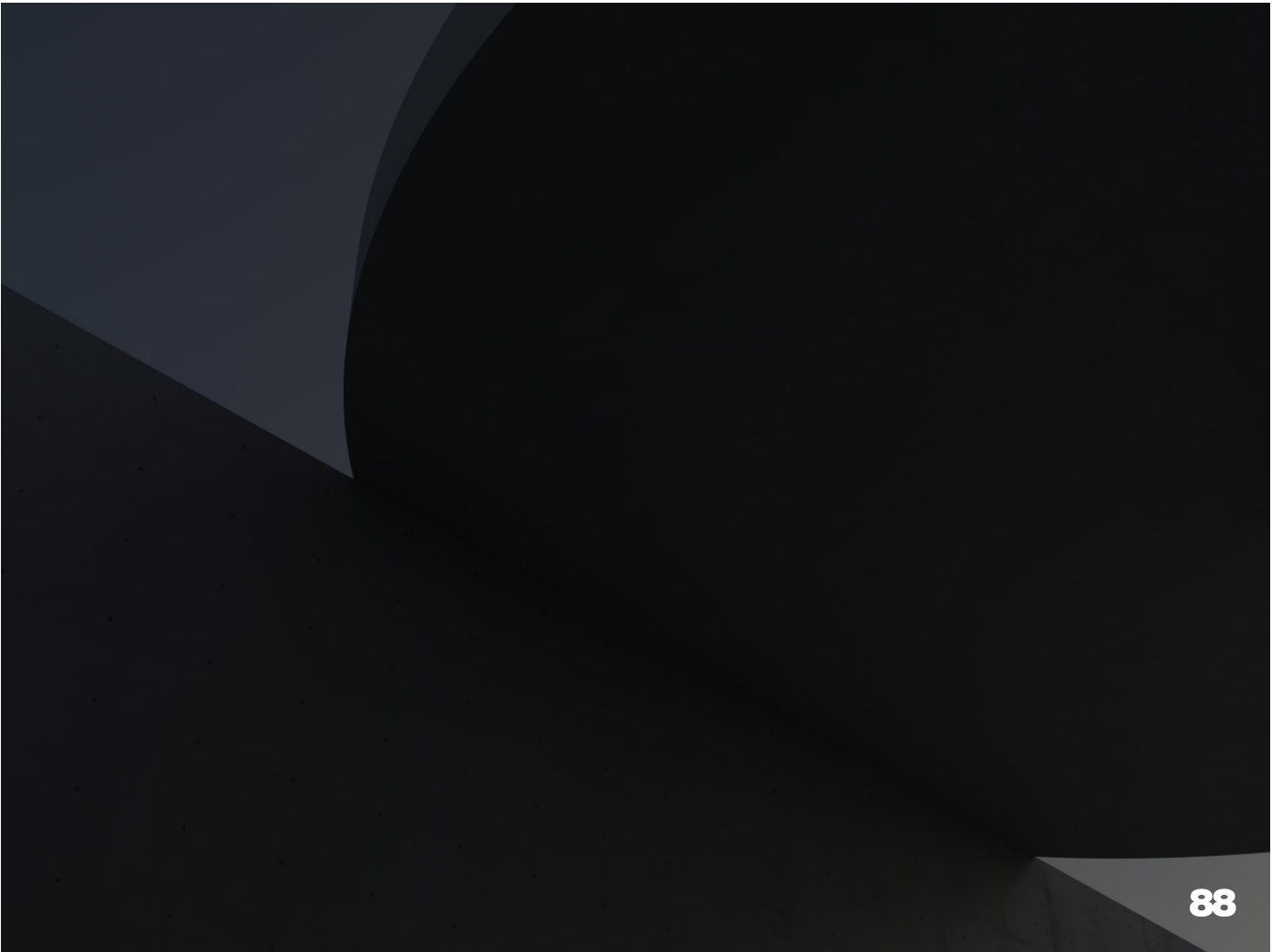
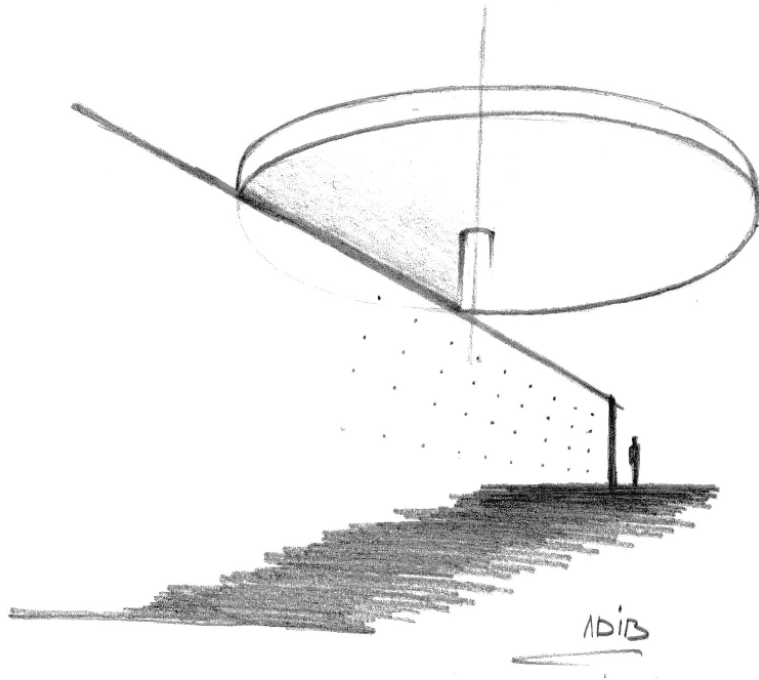
Project







It is a purely geometrical composition based on the line and the circle. Consisting of two walls and a circular slab. This part of the composition is very much in the spirit of the architect. Adib Haydar makes masterful use of geometric architectural forms to mark the main entrance. The impression of Adib's architecture is its emptiness. Within, only light and space surround the visitor.



CIRCLE SHADE



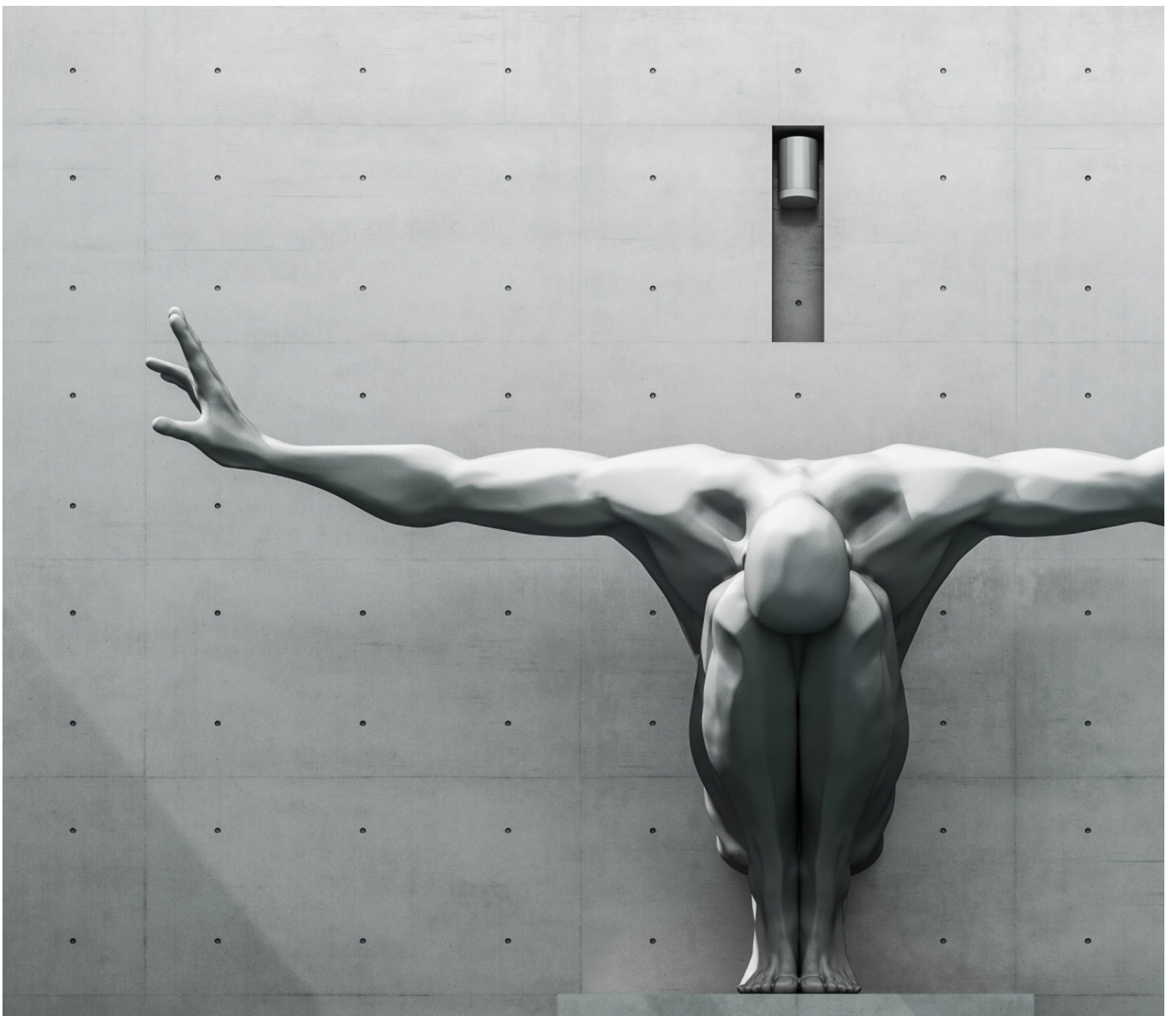
GEOMETRIC LIGHT

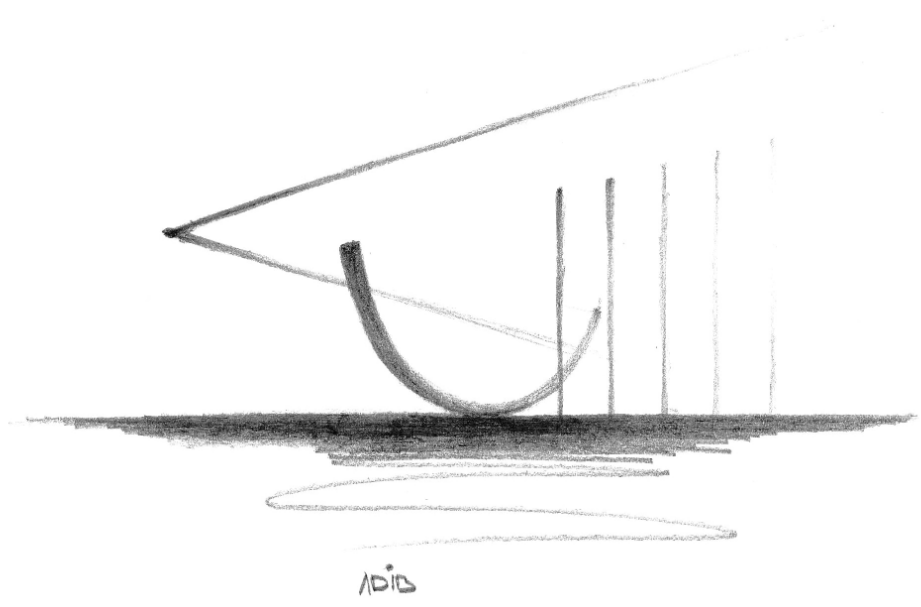
Project

08

A minimalist arrangement of shapes - a circle within an ellipse - produces a striking geometric light effect, evoking the illusion of a concrete circle delicately suspended in light. The allure of simplicity surpasses complexity; in these unadorned forms, beauty becomes palpable. A ceiling, when crafted with care, transcends its utilitarian purpose and transforms into a genuine work of art.







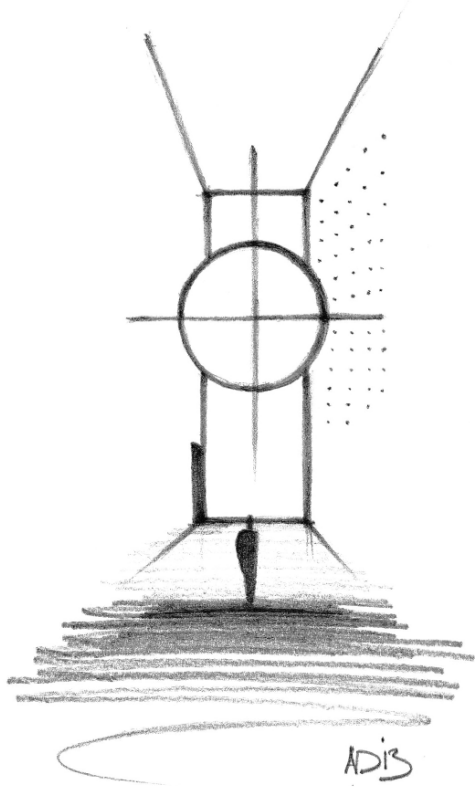
On This page, The space consists of concrete box inside a glass box, one nested inside the other to create on the perimeter a buffer zone with light dramatically introduced by panoramic view. The contrast to the space makes the drama of light even more vivid to visitors. The glass curtain surrounding the emerging volume of concrete reflects sky and water in this green, natural setting. Where grass or trees intervene, they are part of a willful and artistically conceived environment. Light and shadow play across these spaces freely.





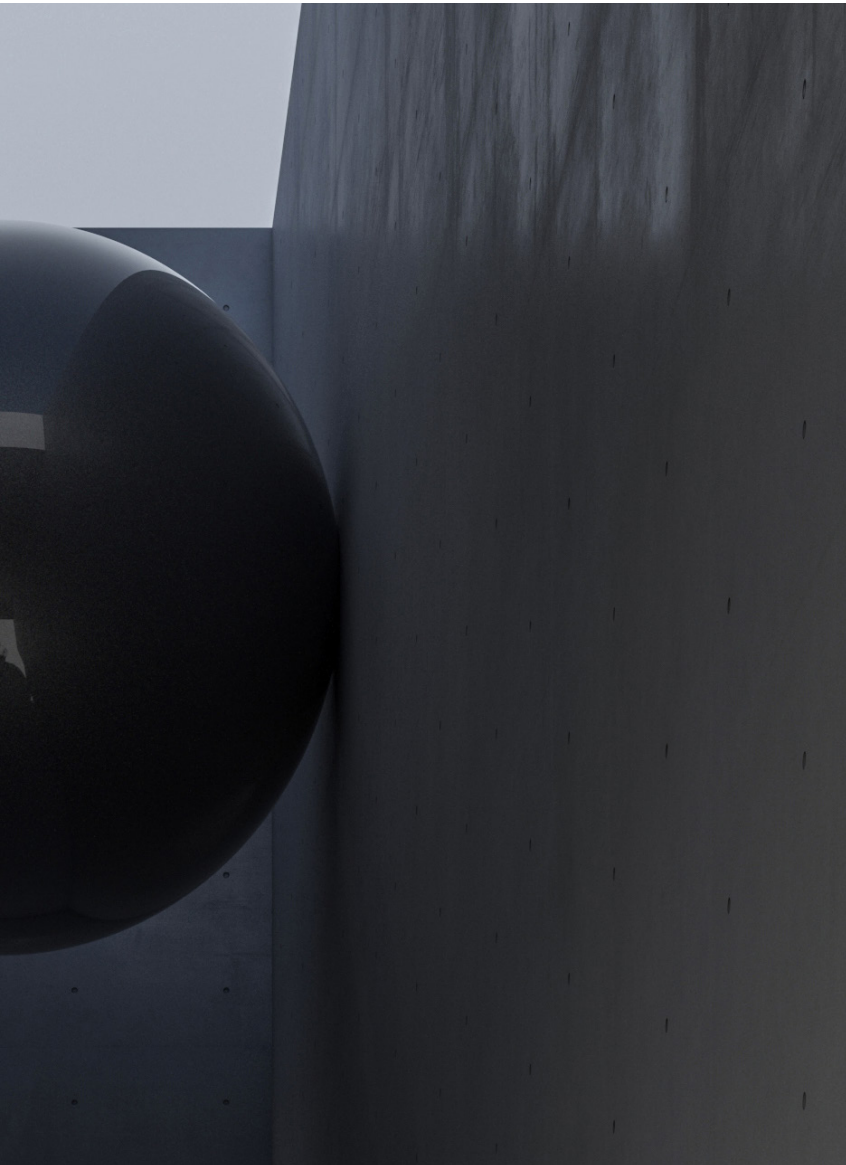
Adib's intelligent mixture of different materials and forms brings the liveliness of natural right up to the House's walls, and even inside, through the reflections and movement of the light.





Entering the stair, the simplicity of walls and the mixture of natural and dark shadows guide throughout the space. Each artist has their space which is designed to enhance as well as harmonize the experience of the artworks. Adib Haydar integrated architecture with natural light, allowing the organic structure to tune in with its natural surroundings.

The art, each of its significance of how we perceive and interact with our surroundings. The space is ideal Adib Haydar design as it takes into account eastern and western concepts, which result in the building of an institution that reverberates with its visitors, regardless of their backgrounds and cultures.





HOUSE A3

Project

11

The play of contrast, such as light and dark, solidity and transparency, concrete and glass, is apparent in this image.



ADIB

ADIB HAYDAR ARCHITECTS

Beirut, Lebanon

Tel: 00961 70 188397

contact@adibhaydar.com

adibhaydar.com

Adib Haydar

Founder, Chief Architect and Creative Director

Ph.D. in Urban planning and Smart Cities Development

adib@adibhaydar.com

Nour Haydar

Interior Architect and Office Director

nour@adibhaydar.com

“This book showcases some of the works of Lebanese Architect Adib Haydar, who strives to present a unique architectural vision for the Arab world in a simple yet strong personal style that is both simple and irreplaceable.

His concrete minimalist architecture embodies a poetry and beauty that is often overlooked in our Arab world today.”

ADIB